

AVON

CAMPAIGN 7

+ FREE GIFT
DETAILS INSIDE



100% Mattifaction Guaranteed!

NEW! FMG GLIMMER MATTE LIPSTICK



modern mattes

VIVID COLOR. VELVETY FEEL.

Creamy and comfortable, **fmg Glimmer Matte Lipstick** delivers richly pigmented shades in a featherlight formula that kisses lips for our dreamiest matte yet!



free

**fmg Match Set
Finishing Powder To Go**
with any \$20 makeup
purchase, pages 3-11,
80-87. \$19 value.

Sold separately on Avon.com.
Limited quantities.

NEW

fmg Glimmer Matte Lipstick

Non-drying formula with pomegranate extract to help provide antioxidant benefits.

Buildable medium-to-full coverage.

Formulated without parabens, talc, sulfates and phthalates. .1 oz. net wt. reg. \$12

\$8.99



fmg

GLIMMER



Sunset Mauve
171-360



Terra Nova
171-340



Garnet Sky
171-393



Wild Orchid
171-431



Chili
171-355



Willow
171-450



fmg Glimmer Cream Eyeliner
Long-wearing formula with soft sheen finish. Retractable. Formulated without parabens, sulfates and talc. .01 oz. net wt. reg. \$9

\$3.99

-  Emerald Green
334-332
-  Starry Night
334-347
-  Saturn Grey
334-328
-  Majestic Plum
334-313
-  Cosmic Brown
334-351
-  Blackest Black
334-366



fmg Glimmer Lipliner
Long-wearing creamy formula with vitamin E. Prevents feathering. Matte finish. Retractable. Formulated without parabens, sulfates and talc. .01 oz. net wt. reg. \$9








\$3.99

-  Honey Peach
327-721
-  Lava Red
327-740
-  Passion Red
327-650
-  Red Brick
330-451
-  Mystery Mauve
330-538
-  Candy Apple
327-903
-  Pink Bouquet
330-356
-  Merlot
330-284
-  Au Naturel
330-318
-  Simply Spice
330-614
-  Chocolate
330-667
-  Perfect Plum
330-887



fmg Glimmer Diamond Eyeliner
Long-wearing formula with subtle sparkle. Retractable. Formulated without parabens, sulfates and talc. .01 oz. net wt. reg. \$9

\$3.99

-  Sterling
331-960
-  Teal Sparkle
331-606
-  Olive
331-940
-  Twilight Sparkle
331-553
-  Sugar Plum
331-625
-  Purple Rain
332-071
-  Smoky Diamond
331-280
-  Brown Sugar
331-568
-  Black Ice
331-610



fmg Glimmer Waterproof Eyeliner
Long-wearing, smudge- and waterproof formula. Retractable. Formulated without parabens, sulfates and talc. .01 oz. net wt. reg. \$9

\$3.99

-  Seafoam Green
334-241
-  Smoky Grey
332-162
-  Blackest Night
229-491
-  Midnight Blue
332-158
-  Blue Skies
334-237
-  Raisin
332-200
-  Brown Chocolate
332-124



fmg Glimmer Brow Definer
Long-wearing formula with castor and coconut oils. Smudge-, transfer-, sweat and waterproof. Retractable. Formulated without parabens, sulfates and talc. .01 oz. net wt. reg. \$9

\$3.99

-  Light Blonde
331-109
-  Blonde
331-113
-  Tawny
331-128
-  Light Brown
331-151
-  Dark Brown
331-147
-  Brunette
331-242



fmg Glimmer Liquid Eyeliner
Quick-drying long-lasting formula. Transfer-, sweat- and waterproof. Matte finish. Formulated without parabens, phthalates and fragrance. .037 fl. oz.

Blackest Black
354-380
reg. \$12

\$9.99



fmg Glimmer Always On Point Eyeliner
Built-in sharpener. Smudge- and waterproof. Formulated without parabens, sulfates and talc. .01 oz. net wt. reg. \$10

\$7.99

-  Black
016-389
-  Black Brown
016-446

TPSY Drunk Shiny Lip Oil

Glossy formula with jojoba, argan and castor oils. Formulated without parabens, sulfates, phthalates and talc. .13 oz. net wt. reg. \$17

\$13



- Love Galore 495-197
- My Boo 495-216

fmg LOVE Lip Butter

Sheer, high-shine formula with cupuaçu seed butter, mango extract and apricot kernel and olive fruit oils. Buildable coverage. Formulated without parabens, sulfates and phthalates. .09 oz. net wt. reg. \$18

\$13.99



- Love Affair 063-242
- Pucker Up 063-128
- Tease 063-132
- Secret Crush 063-147
- Rendezvous 063-166
- Flirtatious 063-219

TPSY Forever Lip Marker

Vibrant long-wearing formula with castor and sunflower oils. Matte finish. Formulated without parabens, sulfates and phthalates. .08 fl. oz. reg. \$17

\$13



- NEW! Plum Jam 481-873
- Crazy Rabbit 495-292
- NEW! Cherry Crush 481-400
- NEW! Pink Fizz 481-706
- Felt Pink 495-240
- Blackberry Bite 495-364
- Sour Candy 495-254

fmg Glimmer Birthday Balm Lip Crayon

Sheer, soft shine formula with non-GMO shea butter. Formulated without parabens and gluten. .1 oz. net wt. reg. \$15

\$11.99



- Lovin' Life 698-867
- Birthday Suit 375-706
- PYT 375-691
- Surprise! 375-710
- Fine Wine 375-725
- Birthday Post 375-750

fmg Glimmer Satin Lipstick

Lightweight creamy formula with pomegranate extract. Buildable coverage. Satin finish. Formulated without parabens and sulfates. .10 oz. net wt. reg. \$12

\$8.99

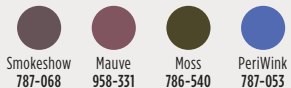
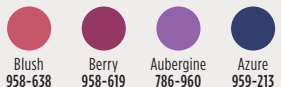
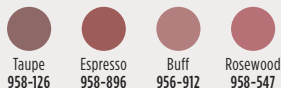


- Wild Cherry 449-708
- Blaze 896-880
- Constellation (Shimmer) 449-731
- Stellar 726-550
- Honeyflower 726-531
- Poppy 897-651
- Aster 448-769
- Desert Moon 449-803
- Windstorm 883-845
- Equinox 449-818
- Twilight 449-822
- Cyclone 890-566
- Sierra Sunset 890-805
- Luna 895-170
- Wildrose 898-533
- Plum Blossom 449-765
- Dahlia 726-350
- Rose Angel 897-939
- Aurora 726-584
- Hibiscus 898-021
- Wildflower 898-040
- Eclipse 448-740
- Tulip 449-712
- Celestial 895-352
- Morning Glory 449-750
- Violet Night 898-548



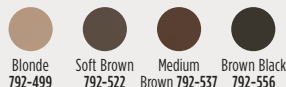
fmg CathyCat Shadow Gaze Matte Color Stick

Long-wearing formula will not budge or smudge. Buildable and blendable coverage. Matte finish. Formulated without parabens and fragrance. .0476 oz. net wt. reg. \$19
\$14.99



fmg Colors of LOVE Hi-Brow Brow Gel

Won't clump, smudge or flake. Matte finish. Formulated without parabens, phthalates and fragrance. .11 fl. oz. reg. \$18
\$13.99



fmg Glimmer Eyeshadow Quad

Soft powder formula lasts all day. No messy fallout. Buildable coverage. Available in Multi or All Matte finishes. Formulated without parabens and fragrance. .21 oz. total net wt. reg. \$15
\$11.99



fmg Cashmere Eyeshadow Palette

Long-wearing formula with crease-resistant wear. Satin, matte and sparkling finishes. Formulated without parabens, talc and fragrance. .63 oz. total net wt. reg. \$40
\$33





fmg LOVE at 1st Lash Mascara
Lash-loving volumizing and lengthening fibers. Won't clump, smudge or flake. Formulated without parabens and sulfates.
Blackest Black .3 fl. oz. **698-670**
Waterproof Blackest Black
Cobra brush. Not shown.
.29 fl. oz. **480-953**
reg. \$18
\$13.99



fmg Glimmer Wash-Off Waterproof Mascara
Waterproof volume. Washes off easily with soap and water. Formulated without phthalates and fragrance.
.21 oz. net wt.
Black 723-107
reg. \$12
\$8.99



fmg Glimmer SuperShock Volumizing Mascara
Lash-building formula with plumping fibers. High-gloss finish. Won't clump, smudge or flake. Formulated without phthalates and fragrance.
.338 fl. oz.
Black 698-829
reg. \$13
\$9.99



fmg Glimmer SuperExtend Nourishing Mascara
Long-wearing lengthening formula with vitamin E, argan and coconut oils. Won't clump, smudge or flake. Formulated without sulfates and talc.
.237 fl. oz.
Black 698-848
Brown Black 698-852
reg. \$13
\$9.99



fmg Cashmere Under Eye Primer
Helps diminish the look of dark circles and fine lines. With caffeine, green tea extract and vegan collagen. Formulated without parabens, phthalates and fragrance.
.317 oz. net wt.
010-429 reg. \$24
\$19



fmg Cashmere Ultimate Volume Mascara
Long-wearing formula with biotin and collagen. Glossy black finish. Won't budge, smudge or transfer. Formulated without parabens, sulfates and talc.
.27 fl. oz.
Rich Black 153-736
reg. \$23
\$18








pops of color



fmg Glimmer Nail Lacquer

Nail-strengthening, long-wearing, no-chip formula. Gel-like cushion texture. Formulated without parabens and phthalates. .4 fl. oz. reg. \$12

\$8.99

- | | | | | |
|---|---|---|---|---|
|  |  |  |  |  |
| SATIN
Lost Galaxy
Plum
598-911 | SATIN
Black Hole
Burgundy
018-286 | SATIN
Supernova
Red
018-267 | SATIN
Night
Sky Berry
602-658 | SATIN High
Magnitude
Maue
018-840 |
|  |  |  |  |  |
| SATIN
Lunar
Tan
602-753 | SATIN
Cool
Comet
602-830 | SATIN
Full
Moon Flush
018-730 | METALLIC
Meteorite
Rose
019-369 | METALLIC
Golden
Galaxy
019-354 |



fmg Glimmer Lip & Cheek Stain

Highly pigmented long-wearing gel formula. Brush tip applicator. Transfer-proof. Formulated without parabens and fragrance. .19 fl. oz. reg. \$17

\$12.99



Plumeria
628-851



Rosette
628-832



fmg Glimmer Powder Illuminator

Lightweight buildable formula with vitamin E. Radiant finish. Formulated without parabens, phthalates and fragrance. .35 oz. net wt. reg. \$14

\$10.99



Rosé
463-628



Prosecco
905-580



fmg Glimmer Be Blushed Cheek Color

Creamy formula with vitamin E. Buildable coverage. Dewy finish. Formulated without parabens, phthalates and fragrance. .14 oz. net wt. reg. \$15

\$11.99



Icy
Petal
022-854



Blushing
Nude
022-911



Golden
Rose
022-840



Tropical
Peach
022-964



Crushed
Berry
022-945



fmg Glimmer Powder Blush

Weightless formula with ultrafine pearl and vitamin E. Buildable coverage. Matte finish. Formulated without parabens, phthalates and fragrance. .28 oz. net wt. reg. \$14

\$10.99



Petal Pink
618-209



Pink Passion
618-213



fmg Glimmer Nail Base & Top Coat

Two-in-one base and top coat primes and shields nails. Glossy finish. Formulated without parabens and phthalates. .4 fl. oz. 018-161 reg. \$12

\$8.99



fmg Glimmer Nail Lacquer Eraser Pen

For a clean and perfected mani. Won't dry out nails or cuticles. Formulated without parabens and phthalates. .135 fl. oz. 704-443 reg. \$12

\$8.99



fresh-faced



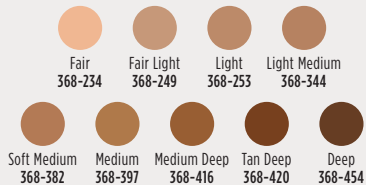
fmg Match Filter Serum Tint Foundation
 Instantly hydrates, blurs flaws and evens tone. With hyaluronic acid, vitamin E and berry complex. Buildable coverage. Demi-matte finish. Formulated without talc, parabens and fragrance. .31 oz. net wt. reg. \$21

\$15.99



fmg Match Tint Radiant Tinted Moisturizer
 Brightens skin tone, boosts moisture and blurs flaws. With passion fruit, chia and sunflower seed oils, vitamin E and pro-vitamin B5. Buildable coverage. Radiant finish. Formulated without parabens. 1 fl. oz. reg. \$14

\$10.99





fmg Match Wand Correcting Stick

Neutralizes unevenness, brightens and color corrects. Long-wearing formula with shea butter and vitamin E. Formulated without parabens, phthalates and sulfates. .21 oz. net wt. reg. \$18

\$13.99



Pistachio:
neutralizes
redness
726-770



Sherbet:
neutralizes
dark circles
and marks
726-790



Gelato:
brightens
dullness
726-785



fmg GLOKOLOR Lip Serum Pencil

Refreshes and smooths lips. With peppermint and argan oils. Formulated without parabens and fragrance. .06 oz. net wt. **787-508** reg. \$20

\$16



fmg Match Set Finishing Powder

Controls shine, visibly blurs pores and fine lines and sets makeup. Mineral-infused formula. Matte finish. Formulated without talc, parabens and fragrance. .22 oz. net wt. **932-472** reg. \$19

\$14.99



fmg GLOKOLOR Hybrid Face Mist

Instant boost of moisture to refresh skin. With aloe vera, agave and algae extracts. Formulated without parabens and sulfates. 2.7 fl. oz. **787-599** reg. \$24

\$20



fmg Match Prime Face Perfector

Flaw-blurring mattifying oil-free formula visibly minimizes pores and fine lines. Sheer coverage. Matte finish. Formulated without parabens. 1 fl. oz. **103-744** reg. \$17

\$12.99



fmg GLOKOLOR Hybrid Face Primer

Softens the appearance of imperfections. With aloe vera, agave and algae extracts. Formulated without parabens and sulfates. 1 fl. oz. **787-637** reg. \$24

\$20

free

ISA KNOX LXNEW
ULTIMATE
REJUVENATING
EYE SERUM

WITH ANY
\$40 SKIN CARE
PURCHASE,
PAGES 13-25
AND 68-73.
\$50 VALUE!

Sold separately on page 14.



Improve your Eye-Q

Eyes are first to show your age because skin around this area is thinner so it's prone to wrinkling. Treat eyes with TLC. Add an eye serum to your regimen.



Isa Knox LXNEW Ultimate Rejuvenating Day Cream

With paeonol, visibly reduces wrinkles and improves the look of elasticity, radiance and skin texture. With nutmeg to help visibly even skin tone. 1.7 fl. oz. **351-892** reg. \$50

\$39.99



Isa Knox LXNEW Ultimate Rejuvenating Dual Night Cream

With paeonol and macadamia oil. Volume Cream: Rice bran extract helps visibly plump skin. Firming Cream: Helps boost collagen and elastin. Each, .85 fl. oz. **564-015** reg. \$50

\$39.99



Isa Knox LXNEW Ultimate Rejuvenating Serum

With paeonol and ceramides, visibly improves elasticity, radiance and skin texture. Reduces the appearance of wrinkles. 1.35 fl. oz. **756-624** reg. \$56

\$44.99



Isa Knox LXNEW Ultimate Rejuvenating Eye Serum

Infused with paeonol and niacinamide to help visibly reduce fine lines around the eye area and depuff under-eye bags. 1 fl. oz. **567-177** reg. \$50

\$39.99



Isa Knox LXNEW Ultimate Rejuvenating Multi-Corrector

Paeonol-infused serum with niacinamide and panthenol. Skin looks smoother and more youthful. 1.7 fl. oz. **496-595** reg. \$50

\$34.99



Isa Knox LXNEW Ultimate Rejuvenating Balm Stick

With peony extract, plus a firming complex featuring castor, moringa and argan oils. Apply to forehead, eyes and neck, or anywhere you want extra care. .24 fl. oz. **267-593** reg. \$24

\$19.99



**Isa Knox LXNEW Platinum
Sculpting Neck and Chest Cream**

With hibiscus extract, ceramide, shea butter, panthenol and squalane to help skin appear firmer, smoother and lifted. 1.7 fl. oz. **548-069** reg. \$50

\$39.99



**Isa Knox LXNEW Platinum
Sculpting Oil Serum**

1.35 fl. oz. **318-720**
reg. \$56

\$44.99

**Isa Knox LXNEW Platinum
Sculpting Day Cream**

Infused with moisturizing hibiscus extract and ceramide. Visibly tightens facial contours. 1.7 fl. oz. **318-845** reg. \$50

\$39.99

**Isa Knox LXNEW Platinum
Sculpting Eye Cream**

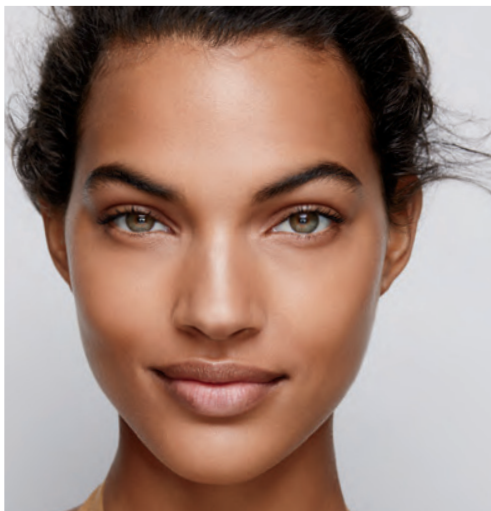
With hibiscus extract, panthenol and antioxidants. Leaves delicate eye area looking firmer, brighter and more defined. .84 fl. oz. **318-883** reg. \$50

\$39.99

**Isa Knox LXNEW Platinum
Sculpting Night Cream**


With firming hibiscus extract, ceramide, squalane and shea butter. Skin looks firmer, smoother and more defined. 1.7 fl. oz. **318-850** reg. \$50

\$39.99





A superior serum
+ a luxurious blend of precious oils
= one supreme elixir

**Anew Ultimate Supreme
Dual Elixir**
See a dramatic difference in even advanced signs of aging. Serum/Oil, .67 fl. oz. each. **588-421** reg. \$60
\$38.99



**Anew Ultimate Supreme
Eye Balm**
Moisturizing formula infused with squalane, sunflower seed oil and antioxidant vitamin E. Wear alone or under makeup. .1 oz. net wt.
625-340 reg. \$45
\$26.99



**Anew Ultimate Supreme
Advanced Performance Crème**
With Black Pearl Extract. See a dramatic difference in deep wrinkles and skin radiance. 1.7 oz. net wt. **014-735** reg. \$60
\$38.99



**Anew Ultimate
Multi-Performance Day Cream
Broad Spectrum SPF 25**

See wrinkles fade and youthful
vibrance return. 1.7 oz. net wt.

763-307 reg. \$42

\$27.99



**Anew Ultimate
Multi-Performance Night Cream**
It works while you sleep to revive and
recreate the look of youthful skin.

1.7 oz. net wt.

763-311 reg. \$42

\$27.99



**Anew Ultimate
Night Repair Serum**

Visibly diminishes fine lines and improves
tone and texture. With peptides, licorice,
hyaluronic acid and niacinamide. Use PM
before moisturizer. 1 fl. oz.

625-355 reg. \$45

\$26.99



**Anew Ultimate
Multi-Performance Eye System**

Visibly smooths crow's-feet
and de-puffs under-eye bags.

Cream, .5 oz. net wt.

Elixir, .09 oz. net wt.

854-433 reg. \$42

\$27.99



Anew Ultimate Regimen Set

Includes three full-size moisturizers
plus one try-it-size serum.

- **Multi-Performance Day Cream
Broad Spectrum SPF 25**
1.7 oz. net wt.
- **Multi-Performance Night Cream**
1.7 oz. net wt.
- **Multi-Performance Eye System**
Cream, .5 oz. net wt. Elixir, .09 oz. net wt.
- **Anew Power Serum** .24 fl. oz.

4-PIECE BOXED KIT

923-228 reg. \$128

\$54.99

Anew Platinum Sculpting Body Serum

Skin looks firmer and smoother.

With niacinamide, panthenol (pro-vitamin B5) and peptides, known to help boost moisture.

6.7 fl. oz. ~~506-249~~ reg. \$45

\$26.99



Anew Platinum

Firm and Sculpt Cream for Neck and Chest

With Peptide Lifting Complex to treat the skin on your neck and chest, which is more vulnerable to wrinkles and sagging. Use PM after cleansing. 1.7 oz. net wt.

~~763-584~~ reg. \$42

\$27.99



**Anew Platinum Day Cream
Broad Spectrum SPF 25**

With Paxillum Technology to help defy gravity and Radiescent Microspheres to help visibly restore radiance. 1.7 oz. net wt.

184-146 reg. \$42

\$27.99



Anew Platinum Night Cream

Skin appears smoother overnight, resculpted over time.

1.7 oz. net wt. **753-439**

reg. \$42

\$27.99



**Anew Platinum
Eye & Lip Cream**

Dual applicator.

.5 oz. net wt. **902-614**

reg. \$42

\$27.99



Anew Platinum Age Delay Serum

Visibly helps boost elasticity and lift facial contours.

With niacinamide (vitamin B3) and panthenol (pro-vitamin B5), plus peptides. 1 fl. oz.

625-609 reg. \$45

\$26.99



Anew Platinum Regimen Set

Includes three full-size moisturizers plus one try-it-size serum.

- **Day Cream Broad Spectrum SPF 25**
1.7 oz. net wt.
- **Night Cream** 1.7 oz. net wt.
- **Eye & Lip Cream** .5 oz. net wt.
- **Anew Power Serum** .24 fl. oz.

4-PIECE BOXED KIT

923-467 reg. \$128

\$54.99



**Anew Vitamin C
Illuminating Priming
Moisturizer**

With natural citrus extracts.
Wear alone or under makeup.
1.7 fl. oz. **914-671** reg. \$34

\$18.99

**Anew Vitamin C
Brightening
Eye Cream**

.5 fl. oz.
953-602
reg. \$34

\$18.99



Anew Power Serum

See a powerful difference in hydration, smooth texture, radiance, firmness and diminished wrinkles. 1 fl. oz. **417-187** reg. \$45

\$26.99



**Anew Vitamin C
Antioxidant Lip Treatment**

Nourishes lips with vitamins C and E.

.13 oz. net wt. **784-547**
reg. \$14

\$7.99



**Anew Vitamin C
Glow Body Scrub**

Exfoliates dry, dull skin. A blend of sunflower seed and almond oils replenishes moisture. Refreshing citrus scent. 9 oz. net wt.

443-752
reg. \$36

\$19.99



**Anew Vitamin C
Nourishing Body Butter**

With vitamins C and E. With hydrating shea butter and niacinamide. Fruity-floral and citrus scent.

7.8 fl. oz. **443-767**

reg. \$32

\$17.99



glow with it

Anew Vitamin C Brightening Serum

Skin is visibly energized and brightened
with the power of 10% pure vitamin C.

1 fl. oz. **522-066**

reg. \$44

\$24.99





Isa Knox Anew Clinical Line Eraser with Retinol Targeted Treatment

In just one week, the look of deep lines is smoothed and resurfaced. Use PM.
.67 fl. oz. **925-159** reg. \$40

\$23.99

Isa Knox Anew Clinical Line Eraser with Retinol Treatment

Great for first-time retinol users. Use AM/PM.
1 oz. net wt. **763-330** reg. \$45

\$27.99



100% showed clinical improvement of fine lines and wrinkles in one week, with increased results over time.

Isa Knox Anew Clinical Line Eraser with Retinol [1.0%] Advanced Retinol Serum
Our highest dose of retinol. Dramatically reduces the appearance of fine lines, wrinkles and dark spots.
1 fl. oz. **390-751** reg. \$50

\$39.99



Isa Knox Anew Clinical Collagen Booster Eye Lift Pro Dual Eye System

In just 7 days, eye area looks lifted, firmer, tighter. With a peptide complex to help boost skin renewal.
Gel, .33 fl. oz. Cream, .33 fl. oz.

961-406 reg. \$40

\$23.99



Isa Knox Anew Clinical Collagen Booster Rejuvenating Serum Ampoules

Powerful peptide blend boosts skin renewal. 60 capsulated single-use ampoules.
.008 fl. oz. each.

803-077 reg. \$62.50

\$49.99



Isa Knox Anew Clinical Collagen Booster Microneedling Polisher

At-home alternative to micro-dermabrasion and micro-needling. Visibly diminishes pores, fine lines and wrinkles. 1.7 fl. oz.

798-592 reg. \$34

\$19.99



Isa Knox Anew Clinical Collagen Booster Firming Cream

With peptides that boost skin renewal to help restore youthful bounce. With moisturizing and skin-plumping niacinamide and squalane. Hygienic, airless pump.

1.7 fl. oz. **069-327** reg. \$45

\$27.99



**Isa Knox Anew Clinical
Revitalize & Reveal Intensive Peel**

Intensive resurfacing peel similar to pro acid peels. With AHA and PHA. 1 fl. oz. **780-025**
reg. \$45

\$27.99



**Isa Knox Anew Clinical
Revitalize & Reveal
Resurfacing Expert Smoothing Fluid**

79% as effective as a pro micro-dermabrasion without the same irritation. 1 fl. oz.

852-282 reg. \$44

\$27.99



**Isa Knox Anew Clinical
Revitalize & Reveal
Advanced Wrinkle Corrector**

In just two weeks, wrinkles appear reduced. 1.7 fl. oz. **914-576**
reg. \$40

\$23.99

**Isa Knox Anew Clinical
Revitalize & Reveal
Resurfacing Lotion for Body**
Exfoliates with gentle yet effective AHA lactic acid.
Moisturizes with shea butter. 5 fl. oz.

390-785 reg. \$34

\$19.99



**Isa Knox Anew Clinical
Revitalize & Reveal
Extra Strength Retexturizing Peel**

Results similar to a 35% pro glycolic peel.*
30 fragrance-free pads. 2" diam. **632-774**
reg. \$40

\$23.99

*In 6 out of 8 attributes tested over a 7-week period.



belif
**The True Cream -
 Moisturizing Bomb**
 For dryness, loss of elasticity and firmness. 26 hours of long-lasting moisture.*
 1.68 fl. oz.
948-463
 reg. \$42
\$38



belif
**The True Cream -
 Aqua Bomb**
 For dryness, dullness and uneven texture. 70% increase in hydration levels.*
 1.68 fl. oz.
235-709
 reg. \$42
\$38



Solutions
Dramatic Firming Cream
 Skin looks and feels smoother.
 1.7 fl. oz.
374-657
 reg. \$14
\$9.99



Solutions
Nurtura Replenishing Cream
 Adds moisture to dry skin. 1.7 fl. oz.
908-263 reg. \$14
\$9.99



Solutions
Banishing Cream Skin Discoloration Improver
 Visibly improves skin tone.
 2.5 fl. oz.
267-115
 reg. \$14
\$9.99



Solutions
Anti-Aging Cream
 Moisturizing formula works to visibly smooth the appearance of fine lines and wrinkles.
 1.7 fl. oz. **949-460**
 reg. \$14
\$9.99



**Rice Water Bright
Rice Bran Gentle
Exfoliating Cleanser**
Daily scrub with
organic rice bran
powder, rice powder
and hydrated silica.
10.1 fl. oz.
376-865
reg. \$15.99
\$12.99



**Rice Water Bright
Foaming Cleanser**
Light whipped foam. With
rice water and soapwort
extract. Skin looks clear
and bright. 10.1 fl. oz.
508-093
reg. \$13
\$11



**Anew Hydra Fusion
1.5% Hyaluronic Acid
Serum**
With three different
molecular sizes of HA
that reach multiple
layers of skin's surface
to visibly plump skin.
1 fl. oz. **290-390**
reg. \$44
\$24.99



**Smaller Size!
Rice Water Bright
Foaming Cleanser**
Light whipped foam. With
rice water and soapwort
extract. Convenient size
for your medicine cabinet.
5 fl. oz. **478-479**
reg. \$8
\$6.49



**Anew Hydra Fusion
De-Puffing Eye Serum**
Eyes look and feel
refreshed. With caffeine
and hyaluronic acid.
Cooling ceramic tip.
Instantly boosts hydration
around eye area by 3X.
.5 fl. oz. **137-737**
reg. \$34
\$18.99



**Rice Water Bright
Cleansing
Facial Wipes**
Great on the go.
With rice extract to
moisturize while
cleansing. Removes
eye makeup.
50 sheets. **508-108**
reg. \$11
\$9



**Farm Rx
Bakuchiol Eye Cream**
With bakuchiol, a
natural alternative to
retinol. Visibly reduces
dark circles, fine lines
and wrinkles without
irritating the delicate
eye area. 1 fl. oz.
565-834 reg. \$37
\$27.99

CLEANSE AND TREAT #1 SET

Isa Knox Anew Clinical Revitalize & Reveal
Advanced Wrinkle Corrector
1.7 fl. oz.

Isa Knox Anew Clinical Revitalize & Reveal
Extra Strength Retexturizing Peel
30 pads.

Rice Water Bright
Mild Cleansing Water
16.9 fl. oz.

3-PIECE SET

\$39.99

OVER \$94 VALUE
177-975



FACE AND EYES SET

Anew Ultimate Supreme
Advanced Performance Crème
1.7 oz. net wt.

Isa Knox Anew Clinical
Collagen Booster
Eye Lift Pro
Dual Eye System
Gel, .33 fl. oz.
Cream, .33 fl. oz.

Rice Water Bright
Foaming Cleanser
10.1 fl. oz.

3-PIECE SET

\$42.99

\$113 VALUE
178-000



GOTTA GLOW SET

Anew Vitamin C Glow Body Scrub
9 oz. net wt.

Anew Vitamin C Nourishing Body Butter
7.8 fl. oz.

**Isa Knox Anew Clinical Revitalize & Reveal
Resurfacing Lotion for Body**
5 fl. oz.

3-PIECE SET

\$40.99

\$102 VALUE

178-106



CLEANSE AND TREAT #2 SET

**Isa Knox Anew Clinical
Revitalize & Reveal
Resurfacing Expert Smoothing Fluid**
1 fl. oz.

**Isa Knox Anew Clinical Line Eraser
with Retinol Treatment**
1 oz. net wt.

**Isa Knox LXNEW Clean
Nourishing Cream Cleanser**
5 fl. oz.

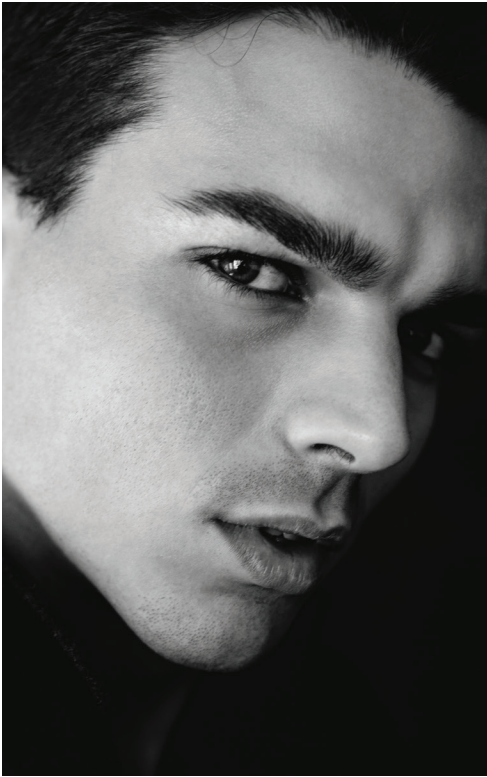
3-PIECE SET

\$44.99

\$101 VALUE

178-034





always captivating

fresh aromatic

Mesmerize Cologne

Bergamot, cardamom and amber.
3.4 fl. oz. 871-458 reg. \$25

\$18.99

free

Mesmerize Cologne
with any \$30 fragrance
purchase, pages 28-37
and 74-79.
\$25 value.

Limited quantities.





woody fougère

Mesmerize Black
Eau de Toilette

Pepper, nutmeg and tonka bean.
3.4 fl. oz. 305-667 reg. \$25

\$18.99



fresh aromatic

Avon Exploration Eau de Toilette
Orange, silver sage and vetiver. 2.5 fl. oz.
593-666 reg. \$25
\$18.99



fresh aromatic

Perceive Cologne
Citrus, sage and cedarwood.
3.4 fl. oz. 194-550 reg. \$25
\$18.99

fresh aromatic

Wild Country Cologne
Lavender, coriander seed and
sandalwood. 3 fl. oz. 086-466
reg. \$22
\$14.99



**Wild Country
Aftershave Splash**
4 fl. oz. 366-432
reg. \$13
\$10.49



**Wild Country
Hair & Body Wash**
5 fl. oz. 215-188
reg. \$8
\$3.99



effortlessly
cool

fresh aromatic

Black Suede Eau de Toilette
Bergamot, leather and oakmoss.

3.4 fl. oz. 908-703

reg. \$22

\$14.99



**Black Suede
Hair & Body Wash**
5 fl. oz. 230-200
reg. \$8
\$3.99



a wanderlust
for the exotic



amber floral
Far Away
Eau de Parfum
Freesia, jasmine and
amber. 1.7 fl. oz.
685-712
reg. \$25
\$18.99



amber floral

**Far Away Gold
Eau de Parfum**

Ylang-ylang, jasmine
and vanilla.

1.7 fl. oz. **685-727**
reg. \$25

\$18.99



fruity floral

**Far Away Infinity
Eau de Parfum**

Bergamot, jasmine sambac
and sandalwood.

1.7 fl. oz. **318-481**
reg. \$25

\$18.99



fruity floral

**Far Away Bali
Eau de Parfum**

Grapefruit, salted
tuberose and amber.

1.7 fl. oz. **451-389**
reg. \$25

\$18.99



**fresh green
floral**

**Haiku Reflection
Eau de Parfum**

Water accord,
acacia blossom
and amber wood.
1.7 fl. oz. **617-657**

**Haiku
Eau de Parfum**

Yuzu, muguet and
blonde woods.
1.7 fl. oz. **601-030**

**Haiku Kyoto Flower
Eau de Parfum**

Violet leaf, white peony
and cotton musk.
1.7 fl. oz. **144-352**

reg. \$25

\$18.99 each

fruity floral

**Rare Amethyst
Eau de Parfum**

Plum, violet and
sandalwood.

1.7 fl. oz.

933-062

reg. \$25

\$18.99



shimmer with glamour



amber floral

Imari Eau de Toilette

Bergamot, jasmine and amber.
1.7 fl. oz. **871-496** reg. \$25

\$18.99



soft floral

Rare Pearls Eau de Parfum

Magnolia, white pepper and rosewood.
1.7 fl. oz. **761-615** reg. \$25

\$18.99



amber floral

Imari Seduction Eau de Toilette

Wild berries, purple orchid and patchouli.
1.7 fl. oz. **452-897** reg. \$25

\$18.99



amber floral

Rare Gold Eau de Parfum

Mandarin zest, ylang-ylang and amber.
1.7 fl. oz. **933-115** reg. \$25

\$18.99



woody floral

Imari Amor Eau de Parfum

Black currant, orris and musk.
1.7 fl. oz. **762-573** reg. \$25

\$18.99



amber floral
Candid Cologne
Bergamot, tuberose
and patchouli.
1.7 fl. oz.
038-295
reg. \$18
\$12.99



soft floral
Dreamlife Cologne
Mimosa flower,
rose and amber.
1.7 fl. oz.
236-227
reg. \$18
\$12.99



woody floral
Night Magic Cologne
Neroli, jasmine
and musk.
1.7 fl. oz.
168-682
reg. \$18
\$12.99



soft floral
Odyssey Cologne
Tuberose,
ylang-ylang and
oakmoss. 1.7 fl. oz.
168-697
reg. \$18
\$12.99



soft floral
**Sweet Honesty
Cologne**
Lily of the valley, rose
and cedarwood.
1.7 fl. oz.
037-595
reg. \$18
\$12.99



soft floral
Timeless Cologne
Cardamom,
jasmine and
patchouli.
1.7 fl. oz.
037-930
reg. \$18
\$12.99



soft floral
Topaze Cologne
Jasmine, rose and
sheer musk.
1.7 fl. oz.
735-217
reg. \$18
\$12.99



fresh green floral
Free O₂ Eau de Toilette
White peach tea,
honeysuckle and musk.
1.7 fl. oz.
265-658
reg. \$18
\$12.99



scented softness

**Perfumed
Skin Softener**
Moisturizing formula leaves
skin soft and scented.
Each, 5 fl. oz.
reg. \$8
\$3.99 each



Candid 103-926



Night Magic Evening Musk 862-112



Odyssey 862-108



Sweet Honesty 104-463



Timeless 104-478



Far Away 812-981



Haiku 813-973



Imari 818-239

HAIKU HAND & BODY SET

fresh green floral

Eau de Parfum

Yuzu, muguet and blonde woods.

1.7 fl. oz.

Body Lotion

6.7 fl. oz.

Hand Cream

2.5 fl. oz.

3-PIECE SET

\$20.99

\$42 VALUE

759-221



RARE PEARLS HAIR & BODY SET

soft floral

Eau de Parfum

Magnolia, white pepper and rosewood. 1.7 fl. oz.

Body Lotion

6.7 fl. oz.

Hair and Body Mist

3.25 fl. oz.

3-PIECE SET

\$25.99

\$51 VALUE

766-712



BLACK SUEDE HAIR & BODY SET

fresh aromatic

Eau de Toilette
Bergamot, leather
and oakmoss.
3.4 fl. oz.

Hair & Body Wash
5 fl. oz.

Bar Soap
3.17 oz. net wt.

3-PIECE SET

\$15.99

\$36 VALUE

325-843



WILD COUNTRY HAIR & BODY SET

fresh aromatic

Cologne
Lavender, coriander seed
and sandalwood.
3 fl. oz.

Hair & Body Wash
5 fl. oz.

Bar Soap
3.17 oz. net wt.

3-PIECE SET

\$15.99

\$36 VALUE

734-058



free

SKIN SO SOFT SOFT & SENSUAL BATH OIL
WITH ANY \$30 PURCHASE,
PAGES 41-51 AND 88-99.
\$24 VALUE. LIMITED QUANTITIES.
Sold separately on page 43.



GINGER

to help skin look smoother and more even-toned



OLIVE OIL

to help moisturize without clogging pores

GREEN TEA

to help enhance skin's glow

**A clean, vegan,
plant-based,
cruelty-free bath and body
collection with naturally
derived ingredients.**

Formulated without parabens, phthalates or synthetic fragrances and dyes, and no animal testing.

good for your skin.
good for the earth.

Sustainable
packaging*

Eucalyptus
mint scent



NEW

SKIN SO SOFT PURE NATURE

Revitalizing Shower Gel
96% naturally derived.
Richly lathering gel.
12 fl. oz. **415-170** reg. \$20
\$15.99

**Revitalizing In-Shower
Body Lotion**
95% naturally derived.
Hydrating and softening
lotion. Apply onto wet skin
after shower or bath.
8 fl. oz. **633-857** reg. \$21
\$16.49

**Revitalizing
Body Cream**
94% naturally derived.
Smooth on moisturizing
cream after bath or
shower. 12 fl. oz. **629-767**
reg. \$21
\$16.49

*Shower Gel and Body Cream bottles: 95% post-consumer recycled material, excluding cap. Body Lotion tube: 55% post-consumer recycled material, excluding cap.

Pump sold separately.



Original
With jojoba oil.
Fresh herbal scent.

Original Gelled Body Oil
Dries to a silky finish.
6.76 fl. oz. **939-500** reg. \$13
\$8.69

Original Bath Oil Spray
Locks in hydration.
Pump sold separately.
5 fl. oz. **967-571** reg. \$14
\$9.29

Original Bonus-Size Bath Oil
Hydrates during or after bath or shower.
25 fl. oz. **037-690** reg. \$30
\$21.69



Original
Body Lotion
48-hour moisture.
11.8 fl. oz.
761-634
reg. \$11
\$7.69



Original
Bath Oil
Hydrates during or after bath or shower.
16.9 fl. oz.
439-040
reg. \$24
\$16.99



Sold separately:
Original
Bath Oil
Spray
Pump
101-320
\$3



Original
Bonus-Size
Shower Gel
Gently cleanses and hydrates.
33.8 fl. oz.
433-444
reg. \$18
\$13.99



Bonus-Size
Body Lotion
48-hour moisture.
33.8 fl. oz.
336-043
reg. \$23
\$18.99
Pump sold separately (page 43).



Soft & Sensual Body Lotion
48-hour moisture.
11.8 fl. oz.
934-312
reg. \$11
\$7.69



Soft & Sensual Bath Oil
Hydrates during or after bath or shower.
16.9 fl. oz.
504-614
reg. \$24
\$16.99



Soft & Sensual Bonus-Size Shower Gel
Gently cleanses and hydrates.
33.8 fl. oz.
018-142
reg. \$18
\$13.99



Soft & Sensual Bonus-Size Body Lotion
48-hour moisture.
33.8 fl. oz.
336-062
reg. \$23
\$18.99
Pump sold separately.



Sold separately:
Bonus-Size Skin So Soft and Moisture Therapy Body Lotion Pump
101-149
\$3



Soft & Sensual
With argan oil.
Spicy floral scent.

Soft & Sensual Bonus-Size Bath Oil
Hydrates during or after bath or shower.
25 fl. oz. **862-920**
reg. \$30

\$21.69

Soft & Sensual Gelled Body Oil
Dries to a silky finish.
6.76 fl. oz. **908-244**
reg. \$13

\$8.69



show your skin
some love



**Radiant Moisture
Bonus-Size Bath Oil**

Hydrates during or after bath
or shower. 25 fl. oz. **249-788**
reg. \$30

\$21.69



**Radiant Moisture
Bonus-Size Shower Gel**

Gently cleanses and hydrates.
33.8 fl. oz. **433-922** reg. \$18

\$13.99



**Radiant Moisture
Bonus-Size Body Lotion**

48 hours of moisture.
33.8 fl. oz.

337-346 reg. \$23

\$18.99

Pump sold separately.



**Supreme Nourishment
Bonus-Size Body Lotion**

48 hours of moisture.
33.8 fl. oz.

337-475 reg. \$23

\$18.99

Pump sold separately.



Sold separately:
**Bonus-Size
Skin So Soft and
Moisture Therapy
Body Lotion Pump**
101-149

\$3

**Moisture Therapy
Bonus-Size Body Lotions**
Each, 33.8 fl. oz. reg. \$18

\$14.99 each

Pump sold separately
(page 44).

Intensive Healing & Repair
72-hour moisture for extra-dry
skin. Fragrance-free. **325-547**

Daily Skin Defense
Helps restore moisture to
everyday dry skin. **603-028**

Calming Relief
Soothes and relieves dry,
itchy skin. Fragrance-free.
761-620

Sold separately:
**Bonus-Size
Skin So Soft and
Moisture Therapy
Body Lotion Pump**
101-149

\$3




Pumps not
included..



**Moisture Therapy
Intensive Healing & Repair
Extra Strength Cream**
24-hour moisturization.
Fragrance-free. 5.3 oz. net wt.
772-972 reg. \$8
\$5.39



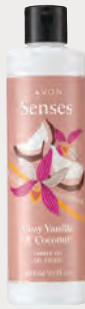
**Moisture Therapy
Balance + Soothe
Body Wash**
Softens as it gently
cleanses. 13.2 fl. oz.
438-078 reg. \$23
\$18



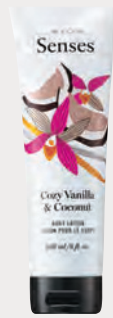
**Moisture Therapy
Balance + Soothe
Body Lotion**
Skin looks softer and
healthier. 13.2 fl. oz.
438-082 reg. \$25
\$20



**Senses
Cozy Vanilla
& Coconut
Body Scrub**
With shea
butter.
9 oz. net wt.
530-314
reg. \$22
\$17.99



**Senses
Cozy Vanilla &
Coconut Shower Gel**
Moisturizing
cleanser. 10 fl. oz.
200-227 reg. \$17
\$13.99



**Senses
Cozy Vanilla
& Coconut
Body Lotion**
With shea butter
and vitamin E.
8 fl. oz.
035-152
reg. \$17
\$13.99



**Senses
Cozy Vanilla
& Coconut
Hand Soap**
With
moisturizing
glycerin.
10.1 fl. oz.
178-675
reg. \$13.99
\$10.99



**Senses
Cozy Vanilla
& Coconut
Body Mist**
With
refreshing
aloe vera
extract.
8 fl. oz.
034-888
reg. \$18
\$14.99



**Senses
Cozy Vanilla
& Coconut
Hand Cream**
With shea
butter and
antioxidants.
2.5 fl. oz.
015-029
reg. \$6
\$4.99

**Senses Sparkling
Grapefruit & Orange Blossom**
Energize with a juicy mix
of zesty grapefruit, bright
orange blossom and
delicate honeysuckle.

Shower Gel
Moisturizing cleanser derived
from coconut. 10 fl. oz.
367-204 reg. \$17
\$13.99

Body Lotion
With shea butter and vitamin E.
8 fl. oz. 367-219 reg. \$17
\$13.99

Body Mist
With refreshing aloe vera
extract. 8 fl. oz. 034-687
reg. \$18
\$14.99

Hand Soap
With moisturizing glycerin.
10.1 fl. oz. 415-127 reg. \$13.99
\$10.99

Hand Cream
With shea butter and
antioxidants. 2.5 fl. oz.
852-120 reg. \$6
\$4.99





Cherry Blossom
425-033



Sensitive Skin
213-151



Vanilla Cream
214-220



Soft Pink
425-052



Cucumber Melon
688-950



Orange & Honeysuckle
633-952



Endless Ocean
425-048



Lily & Honeysuckle Blossom
423-394



Lavender Garden
424-735

soak away stress

Senses Bubble Bath
Each, 24 fl. oz. reg. \$11

\$8.99 each

bee goodness for hair

With revitalizing honey, royal jelly and propolis (tree sap plus beeswax).



Elastine PropoliThera

Volumizing

Enhances texture. Hair looks fuller, thicker, stronger. Each, 16.9 fl. oz.

A. Shampoo 892-607

B. Conditioner 892-870

Damage Repair

Helps hair appear smooth and manageable. Each, 16.9 fl. oz.

C. Shampoo 053-082

D. Conditioner 638-681

E. Hair Oil Serum

Helps to strengthen, protect, moisturize and smooth hair, and to add shine.

5.7 fl. oz. **895-190**

F. Hair Mask

Enriched with nutrients to help deeply nourish hair and mend damaged split ends. 10.1 fl. oz. **150-301**

reg. \$18 each

\$15.99 each



Root Touch-Up
Instantly covers up roots and bare spots. With black bean and ginseng. Built-in mirror. Each, .25 oz. net wt. reg. \$18



\$15.99 each



Reddish Brown
243-627



Light Brown
244-642



Dark Brown
245-213



Black
245-251



**Advance Techniques
360 Nourish
with Moroccan Argan Oil
Leave-In Treatment**
Moisturizes dry, damaged hair. With vitamins B and E. 2 fl. oz. **511-411**
reg. \$16

\$11.69



**Elastine PropoliThera
Leave-In Conditioner**
Nourishes dry hair. With royal jelly. 8.1 fl. oz. **102-570**
reg. \$19

\$15



**Advance Techniques
Daily Shine Dry Ends
Serum**
Helps mend and nourish split ends instantly. With pro-vitamin B5. 2 fl. oz. **883-190**
reg. \$11

\$7.99



**Advance Techniques
Daily Shine
2-in-1
Shampoo &
Conditioner**
Leaves hair feeling clean, conditioned and frizz-free. With pro-vitamin B5. 11.8 fl. oz. **358-218**
reg. \$11

\$8.99

**Skin So Soft Original
Replenishing Hand Cream**
3.4 fl. oz. **941-268**
reg. \$5

**Skin So Soft Radiant Moisture
Replenishing Hand Cream**
3.4 fl. oz. **892-650**
reg. \$5

**Skin So Soft Soft & Sensual
Replenishing Hand Cream**
3.4 fl. oz. **867-315**
reg. \$5

**Moisture Therapy
Intensive Healing & Repair
Hand Cream**
4.2 fl. oz. **482-937**
reg. \$6

**Avon Care Silicone Glove
Protective Hand Cream**
3.4 fl. oz. **366-887**
reg. \$6

\$2.69 each



**Senses Shower Gel
Blushing Cherry Blossom**
5 fl. oz. **423-299**
reg. \$6
\$3.69



**Senses Shower Gel
Juicy Pomegranate
& Mango**
5 fl. oz. **462-139** reg. \$6
\$3.69



**Senses Shower Gel
Fresh Cucumber & Melon**
5 fl. oz. **462-071**
reg. \$6
\$3.69



**Senses Shower Gel
Silky Vanilla**
5 fl. oz. **462-105**
reg. \$6
\$3.69



**Original
Shower Gel**
5 fl. oz. **914-580**
reg. \$8
\$5.19



**Soft & Sensual
Shower Gel**
5 fl. oz. **435-600**
reg. \$8
\$5.19



**Radiant Moisture
Shower Gel**
5 fl. oz. **410-914**
reg. \$8
\$5.19

24-hour odor protection

**Roll-On
Anti-Perspirant
Deodorant**

Each, 2.6 fl. oz.
reg. \$3.60

\$2.69 each



Rare Pearls
906-897



Night Magic Evening
Musk 836-298



Odyssey
410-880



Sweet Honesty
439-021



Timeless
941-583



Candid
656-095



Far Away
891-376



Haiku
836-264



Imari
180-887



Rare Gold
836-250



Skin So Soft
Soft & Sensual
714-861



Cool Confidence
Original
926-777



Cool Confidence
Baby Powder
427-275



Feelin' Fresh Original
925-546



On Duty Unscented
926-820



On Duty Sport
875-726



On Duty Original
393-970



Black Suede
337-403



Mesmerize
663-442



Wild Country
656-080



**Skin So Soft
Supreme Nourishment
Tropical Coconut Lip Balm**
.14 oz. net wt.
958-370 reg. \$2
\$1.39



**Moisture Therapy
Intensive Healing & Repair
Moisturizing
Lip Treatment Balm**
.14 oz. net wt. 285-117 reg. \$2
99¢



Perfumed Liquid Deodorant
Aluminum-free. Fast-drying.
Easy fingertip application.
Soft floral scent. 2 fl. oz.
687-681 reg. \$6
\$4.50



**CHI® Essentials Revive Keratin + Bonding
Restoring Shampoo &
Restoring Conditioner**
Each, 12 fl. oz.
\$50 total value
Both for \$27.99
938-887



**Elastine Salon de Color
Color Vibe
Purple Shampoo & Purple Conditioner**
Each, 8.4 fl. oz.
\$34 total value
Both for \$19.99
946-900



**Elastine HempharmX
Hydrating Shampoo &
Hydrating Conditioner**
Each, 12 fl. oz.
\$48 total value
Both for \$27.99
672-572



**Dr. Groot
Scalp Fortifying Hair-Thickening Shampoo**
13.5 fl. oz.
Premium Scalp Cleansing Brush
\$54 total value
Both for \$33.99
672-740



**SKIN SO SOFT
ORIGINAL SET**

Original Beauty Bar Soap
3.17 oz. net wt.

Original Gelled Body Oil
6.76 fl. oz.

**Original
Bonus-Size Bath Oil**
25 fl. oz.

3-PIECE SET

\$23.99

OVER \$47 VALUE

674-025



**SKIN SO SOFT
RADIANT MOISTURE SET**

**Radiant Moisture
Shower Gel**
5 fl. oz.

**Radiant Moisture
Replenishing
Hand Cream**
3.4 fl. oz.

**Radiant Moisture
Bonus-Size Bath Oil**
25 fl. oz.

3-PIECE SET

\$20.99

\$43 VALUE

673-052



make a statement

Imbue your style (and your spirit) with bold blue hues and heartfelt sentiments.

necklace
and earring
set

set of 3

NEW

Blue Luster Collection

Blue glass faceted beads, pearlesque beads and goldtone beaded accents set in goldtone.

Necklace and Earring Set

Four-row necklace: longest, 18" L with 3½" extender; shortest, 7" L. Pierced hoops, 1¼" L. **095-357**
reg. \$29.99

\$22.99 the set

Stretch Bracelet Set

Includes 3 separate bracelets. Stretches to fit most. **095-361**
reg. \$16.99

\$12.99 the set



Love/
Goldtone with
Mother-of-Pearl
095-380

Faith/
Silvertone with
Abalone Shell
095-376



Faith/
Silvertone
095-400



Love/
Goldtone
095-395

NEW

Meaningful Collection

Pendant Necklace

16½" L with
3½" extender.
reg. \$22.99

\$16.99 each

Beaded Stretch Bracelet

With blue or pink
faceted glass beads
and hanging charms.
Stretches to fit most.
reg. \$16.99

\$12.99 each



golden glamour

Lace-like detailing and luxe
layers take center stage.

necklace and
earring set

NEW

Rhinestone Lace Collection
Goldtone with clear stone accents.

Choker and Earring Set

Choker necklace, 14½" L with 3½"
extender. Pierced drops, approx. 1" L.

095-414
reg. \$24.99

\$19.99 the set

Cuff Bracelet

Stretches to fit most.

095-433
reg. \$19.99

\$14.99



set of 4

set of 3

Pearly Goldtone Collection
Goldtone with pearlesque accents.

Necklace Set

Includes 4 separate necklaces (the third shown from top down is a double-row): longest, 24" L with 3/2" extender; shortest, 16 1/2" L with 3/2" extender. **287-435** reg. \$24.99

\$19.99 the set

Bracelet Set

Includes 3 separate bracelets: pearly bracelet stretches to fit most; 2 chain bracelets, each, 7 1/2" L with 1" extender. **287-469** reg. \$16.99

\$12.99 the set

Earring Pack

6-pair pack. Drops, 1 1/2" L; hoops, approx. 1" L. Pierced. **287-473** reg. \$19.99

\$14.99 the pack

six-pair set



shades of spring

Pretty pastels and deep blues pair perfectly with whites and denim.



Pastel Flower Collection Multicolor pastels set in goldtone.

Necklace
With freshwater pearls.
16½" L with 3½" extender.
Lobster closure.
287-420
reg. \$19.99
\$14.99

Earrings
Hoops, 1½" L. Pierced.
Turquoise-colored **287-048**
White **286-879**
Pink **286-898**
reg. \$16.99
\$12.99 each pair



set of five

Denim Blue Collection

Mother-of-pearl beads, blue glass beads and silvertone accents set in silvertone.

Long Necklace

Two-layer necklace. 30" L with 3½" extender. Lobster closure.

271-956

reg. \$22.99

\$16.99

Earrings

Raffia fringe hoops, 2" L. Pierced.

286-864

reg. \$16.99

\$12.99

Bracelet Set

Five-row set. Stretches to fit most.

272-068

reg. \$19.99

\$14.99 the set

spring refresh

Breeze into the season with light and airy looks, plus pops of patterns and prints that channel the art of effortless dressing.



ROUND NECKLINE
for a
flattering fit

**STRIPED MESH
PUFF SLEEVES**
add a fun and
fresh contrasting
detail

NEW

❖ **Novelty Mesh Sleeve Top**

Blue top with round neckline and striped mesh puff sleeves.

Body: polyester/spandex. Contrast mesh sleeves: 100% polyester.

Center back length: 22½" on M; 25" on 1X. Machine wash, line dry. Imported.

XS(0-2) **093-976** M(8-10) **094-054** XL(16) **094-126** 2X(22W-24W) **094-145**

S(4-6) **094-035** L(12-14) **094-069** 1X(18W-20W) **094-130** 3X(26W-28W) **094-236**

reg. \$39.99

\$29.99



NEW

❖ **Striped Button-Detail Dress**

Navy-and-white-striped dress with V neckline with three-button detail, short puff sleeves with elastic cuff, empire waist and zipper closure on back. Lined. Polyester/spandex with 100% polyester lining. Center back length: 42" on M; 44" on 1X. Machine wash, line dry. Imported.

XS(0-2) **094-255**

S(4-6) **094-260**

M(8-10) **094-289**

L(12-14) **094-308**

XL(16) **094-312**

1X(18W-20W) **094-327**

2X(22W-24W) **094-350**

3X(26W-28W) **094-370**

reg. \$49.99

\$39.99



NEW

❖ **Grommet Slip-On Sneaker**

Navy slip-on sneaker with elastic gore and grommet detail on upper. Man-made materials. Imported.

6 **094-456** 9 **094-619**

7 **094-480** 10 **094-638**

8 **094-551** 11 **094-695**

reg. \$32.99

\$24.99



crisp classic

❖ Lightweight Woven Shirt

White-and-blue-pinstripe oversized shirt with button placket down full length of front and long sleeves with cuffs. Polyester/cotton.

Center back length:

27½" on M; 29" on 1X.

Machine wash, line dry.

Imported.

XS(0-2) **240-006**

S(4-6) **240-010**

M(8-10) **240-063**

L(12-14) **240-078**

XL(16) **240-120**

1X(18W-20W) **240-135**

2X(22W-24W) **240-154**

3X(26W-28W) **251-469**

reg. \$46.99

\$36.99

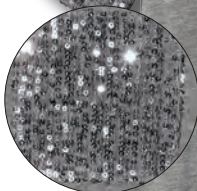
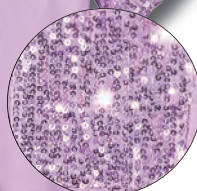


OVERSIZED FIT

with the
polished look
of pinstripes

gleam team

2-PACK



**SEQUIN
POCKET**
and sleeves
for a fun hint
of glint

APPAREL SIZE CHART

SIZE	BUST	WAIST	HIP
XS 0/2	30.5"-32"	23.5"-25"	32.5"-34"
S 4/6	33.5"-35"	26.5"-28"	35.5"-37"
M 8/10	36.5"-38"	29.5"-31"	38.5"-40"
L 12/14	39.5"-41"	32.5"-34"	41.5"-43"
XL 16	43"-44"	35.5"-36.5"	44.5"-45.5"
1X 18W/20W	46.5"-48.5"	39"-41"	48"-50"
2X 22W/24W	50.5"-52.5"	43"-45"	52"-54"
3X 26W/28W	54.5"-56.5"	47"-49"	56"-58"

❖ 2-Pack Sequin-Trim Tees

Includes heather grey and light purple tees with V neckline, sequined chest pocket and short sleeves. Rayon/spandex. Center back length: 22½" on M; 24" on 1X. Machine wash, dry flat. Imported.

XS(0-2) **254-271** L(12-14) **258-626** 2X(22W-24W) **259-895**
 S(4-6) **258-100** XL(16) **259-861** 3X(26W-28W) **259-929**
 M(8-10) **258-573** 1X(18W-20W) **259-880**
 reg. \$44.99

\$34.99 the pack

CREW
NECKLINE
and front
pocket

4-PACK

SLIGHTLY
CURVED HEM
for shape and
movement

NEW

❖ 4-Pack Modern Tees

Includes green, peach, tan and floral/leaf-print crew-neck tees with chest pocket and slightly curved hem. Cotton/polyester. Center back length: 25" on M; 27" on 1X. Machine wash, dry flat. Imported.

XS(0-2) 094-700

M(8-10) 094-805

XL(16) 094-896

2X(22W-24W) 095-247

S(4-6) 094-729

L(12-14) 094-824

1X(18W-20W) 094-920

3X(26W-28W) 095-342

reg. \$49.99

\$39.99 the pack

fresh for spring, fab for fall!

LONG SLEEVES
with functional
button tab for
adjustable
length

REMOVABLE
tie-waist
belt

❖ **Belted Shirt Dress**
Olive dress with collar,
two chest pockets with
flaps, button placket
down full length of
front, long sleeves with
tab and removable tie-
on belt. 100% polyester.
Center back length:
39½" on M; 40½" on 1X.
Machine wash (remove
belt prior to washing),
line dry. Imported.
XS(0-2) **239-871**
S(4-6) **239-886**
M(8-10) **239-890**
L(12-14) **239-905**
XL(16) **239-910**
1X(18W-20W) **239-977**
2X(22W-24W) **239-981**
3X(26W-28W) **239-996**
reg. \$53.99
\$42.99

**FULL BUTTON
PLACKET**
down the
front

Shown:
White.

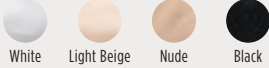


❖ **Playtex® 18 Hour® Active Lifestyle
Wirefree Bra (US4159)***

Back closure. Polyester/nylon/spandex.

White, Light Beige or Nude: 36-42B; 36-44C,D;
38-46DD; 38-44DDD. **Black:** 36-42B;
36-44C,D; 38-44DD. reg. \$39

\$33.99



Shown:
Nude.

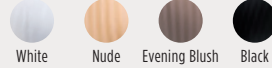


❖ **Playtex® Perfectly Smooth®
Wirefree Bra (US4707)***

Back closure. Nylon/spandex, polyester lining.

White, Nude, Black: 36-42B; 36-44C,D,DD;
36-42DDD. **Evening Blush:** 36-44C,D,DD.
reg. \$46

\$39.99



Shown:
Natural Beige.



❖ **Playtex® 18 Hour® Original Comfort Strap®
Wirefree Bra (4693)***

Back closure. Natural latex rubber/polyester/nylon/
cotton. **White, Natural Beige or Toffee:** 36-48B,C;

34-48D,DD; 38-48DDD. **Zen Blue:** 36-42B; 36-44C,D;
38-46DD,DDD. **Sailor Blue:** 36-44C,D; 38-46DD;
44-46DDD. **Black:** 36-48B; 36-54C; 36-50D, 54D;
38-54DD. reg. \$39

\$33.99



Shown:
Light Beige.



❖ **Playtex® 18 Hour®
Posture Bra (E525)***

Front closure. Nylon/spandex.

White: 34-48B,C; 36-48D,DD.
Light Beige: 36-42B; 36-44C,D; 38-46DD.
Black: 36-42B,C,D; 38-46DD,DDD.
reg. \$39

\$33.99



Playtex® is a registered trademark used under license.

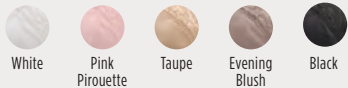
*Hand wash, line dry. Imported.

Shown:
Taupe.



❖ **Playtex® Front Close® No Poke Dreamwire™ Bra (US4423)***
Front closure. Nylon/spandex/polyester.
Sizes: 38-48C,D,DD,DDD
(all colors).
reg. \$46

\$39.99



Shown:
Sandshell.



❖ **Playtex® Ultra Soft No Poke Dreamwire™ Bra (US4833)***
Back closure. Nylon/spandex.
Sizes: 38-42B,C,D,DD,DDD; 44C,D,DD,DDD;
46D,DD (all colors).
reg. \$46

\$39.99



Shown:
Brief Taupe.



Shown:
Hi-Cut Taupe.



❖ **Bali® Beautifully Confident with Leak Protection Liner***
Light leak protection liner in crotch.
Body and lace: Polyester/spandex. Crotch lining: Polyester. reg. \$15

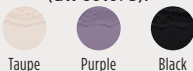
\$12.99 each



Brief (DFLLB1)
Sizes: M, L, XL, 2XL
(all colors).



Hi-Cut (DFLLH1)
Sizes: M, L, XL, 2XL
(all colors).





**Anew Ultimate
Multi-Performance
Eye System**
Cream, .5 oz. net wt.
Elixir, .09 oz. net wt.
854-433 reg. \$42
\$27.99



**Anew Ultimate
Multi-Performance
Day Cream**
Broad Spectrum SPF 25
1.7 oz. net wt.
763-307 reg. \$42
\$27.99



**Anew Ultimate
Multi-Performance
Night Cream**
1.7 oz. net wt.
763-311
reg. \$42
\$27.99



**Anew Ultimate
Night Repair Serum**
1 fl. oz.
625-355
reg. \$45
\$26.99



**Anew Ultimate
Supreme
Dual Elixir
Serum/Oil**
.67 fl. oz. each.
588-421 reg. \$60
\$38.99



**Anew Ultimate
Regimen Set**
Three full-size day, night
and eye creams;
one try-it-size serum.
923-228 reg. \$128
\$54.99



**Anew Ultimate
Supreme Advanced
Performance Crème**
1.7 oz. net wt.
014-735
reg. \$60
\$38.99



**Anew Ultimate
Supreme Eye Balm**
0.1 oz. net wt.
625-340
reg. \$45
\$26.99



**Anew Platinum
Eye & Lip Cream**
.5 oz. net wt.
902-614
reg. \$42
\$27.99



**Anew Platinum
Firm and Sculpt Cream
for Neck and Chest**
1.7 oz. net wt.
763-584
reg. \$42
\$27.99



**Anew Platinum
Day Cream**
Broad Spectrum SPF 25
1.7 oz. net wt.
184-146
reg. \$42
\$27.99



**Anew Platinum
Night Cream**
1.7 oz. net wt.
753-439
reg. \$42
\$27.99



**Anew Platinum
Age Delay Serum**
1 fl. oz.
625-609
reg. \$45
\$26.99



**Anew Platinum
Sculpting Body Serum**
6.7 fl. oz.
506-249
reg. \$45
\$26.99



**Anew Platinum
Regimen Set**
Three full-size day, night
and eye creams;
one try-it-size serum.
923-467 reg. \$128
\$54.99



**Anew
Power Serum**
1 fl. oz.
417-187
reg. \$45
\$26.99



**Isa Knox Anew Clinical
Collagen Booster
Eye Lift Pro
Dual Eye System**
Gel, .33 fl. oz. Cream, .33 fl. oz.
961-406 reg. \$40
\$23.99



**Isa Knox Anew Clinical
Collagen Booster
Rejuvenating Serum Ampoules**
60 capsulated single-use ampoules.
.008 fl. oz. each. 803-077
reg. \$62.50
\$49.99



**Isa Knox Anew Clinical
Collagen Booster
Firming Cream**
1.7 fl. oz.
069-327
reg. \$45
\$27.99



**Isa Knox Anew Clinical
Collagen Booster
Microneedling Polisher**
1.7 fl. oz.
798-592
reg. \$34
\$19.99



**Isa Knox Anew Clinical
Revitalize & Reveal
Extra Strength
Retexturizing Peel**
30 fragrance-free pads. 2" diam.
632-774 reg. \$40
\$23.99



**Isa Knox Anew Clinical
Revitalize & Reveal
Advanced Wrinkle Corrector**
1.7 fl. oz.
914-576 reg. \$40
\$23.99



**Isa Knox Anew Clinical
Revitalize & Reveal
Resurfacing Lotion for Body**
5 fl. oz.
390-785
reg. \$34
\$19.99



**Isa Knox Anew Clinical
Revitalize & Reveal
Intensive Peel**
1 fl. oz.
780-025
reg. \$45
\$27.99



**Isa Knox Anew Clinical
Revitalize & Reveal
Resurfacing Expert
Smoothing Fluid**
1 fl. oz.
852-282 reg. \$44
\$27.99



**Isa Knox Anew Clinical
Line Eraser
with Retinol [1.0%]
Advanced Retinol Serum**
1 fl. oz.
390-751 reg. \$50
\$39.99



**Isa Knox Anew Clinical
Line Eraser with
Retinol Treatment**
1 oz. net wt.
763-330
reg. \$45
\$27.99



**Isa Knox Anew Clinical
Line Eraser with Retinol
Targeted Treatment**
.67 fl. oz.
925-159
reg. \$40
\$23.99



**Anew Vitamin C
Illuminating Priming
Moisturizer**
1.7 fl. oz.
914-671 reg. \$34
\$18.99



**Anew Vitamin C
Brightening Serum**
1 fl. oz.
522-066
reg. \$44
\$24.99



**Anew Vitamin C
Brightening Eye Cream**
.5 fl. oz.
953-602
reg. \$34
\$18.99



**Anew Vitamin C
Nourishing Body Butter**
7.8 fl. oz.
443-767
reg. \$32
\$17.99



**Anew Vitamin C
Glow Body Scrub**
9 oz. net wt.
443-752
reg. \$36
\$19.99



**Anew Vitamin C
Antioxidant Lip Treatment**
.13 oz. net wt.
784-547
reg. \$14
\$7.99



**Isa Knox Anew
Solaire Active Face
& Body Protection Lotion
Broad Spectrum SPF 50**
2.7 fl. oz. 154-948 reg. \$35
\$27.99



**Isa Knox Anew Solaire
Everyday Face Protection Lotion
Broad Spectrum
SPF 50**
1.7 fl. oz. 911-400 reg. \$32
\$24.99



Isa Knox LXNEW Clean Nourishing Cream Cleanser
5 fl. oz. **717-990**
reg. \$12
\$9.99



Isa Knox LXNEW Clean 2-in-1 Exfoliating Cleansing Balm
3.5 oz. net wt. **718-006**
reg. \$30
\$24.99



Isa Knox LXNEW Clean Soothing Whipped Oil Cleanser
5 fl. oz. **718-025**
reg. \$16
\$12.99



Anew Hydra Fusion 1.5% Hyaluronic Acid Serum
1 fl. oz. **290-390**
reg. \$44
\$24.99



Anew Hydra Fusion De-Puffing Eye Serum
.5 fl. oz. **137-737**
reg. \$34
\$18.99



Anew Hydra Fusion Cleansing Micellar Water
10.1 fl. oz. **139-380**
reg. \$14
\$8.99



Anew Hydra Fusion Nighttime Facial Treatment
1.7 oz. net wt. **139-429**
reg. \$34
\$18.99



Anew Hydra Fusion Gel Cream
1.7 oz. net wt. **266-893**
reg. \$34
\$18.99



Farm Rx Bakuchiol Eye Cream
1 fl. oz. **565-834**
reg. \$37
\$27.99



Farm Rx Bakuchiol Cream
3.04 fl. oz. **004-044**
reg. \$44
\$32.99



Farm Rx Super Greens Multivitamin Moisture Cream
3.04 fl. oz. **314-141**
reg. \$37
\$27.99



Farm Rx Bakuchiol Serum
1 fl. oz. **247-417**
reg. \$44
\$32.99



Farm Rx Super Greens Cooling Gel
3.04 fl. oz. **354-227**
reg. \$37
\$27.99



Farm Rx Super Greens Refreshing Eye Cream
1 fl. oz. **412-826**
reg. \$31
\$22.99



Farm Rx Green Goddess Facial Oil
1 fl. oz. **934-733**
reg. \$50
\$39.99



Farm Rx Super Greens Refreshing Gel Cleanser
8.11 fl. oz. **913-049**
reg. \$25
\$17.99



Avon Solutions Nurtura Replenishing Cream
1.7 fl. oz. **908-263**
reg. \$14
\$9.99



Avon Solutions Banishing Cream Skin Discoloration Improver
2.5 fl. oz. **267-115**
reg. \$14
\$9.99



Avon Solutions Anti-Aging Cream
1.7 fl. oz. **949-460**
reg. \$14
\$9.99



Avon Solutions Dramatic Firming Cream
1.7 fl. oz. **374-657**
reg. \$14
\$9.99



**Rice Water Bright
Foaming Cleanser**
Smaller size! 5 fl. oz.
~~478-479~~
reg. \$8
\$6.49



**Rice Water Bright
Foaming Cleanser**
10.1 fl. oz.
~~508-093~~
reg. \$13
\$11



**Rice Water Bright
Rice Bran Gentle
Exfoliating Cleanser**
10.1 fl. oz.
~~376-865~~
reg. \$15.99
\$12.99



**Rice Water Bright
Cleansing Facial
Wipes**
50 sheets.
~~508-108~~
reg. \$11
\$9



**Rice Water Bright
Facial Cleansing Lotion**
6.76 fl. oz.
~~720-184~~
reg. \$12
\$9.99



**Rice Water Bright
Light Facial
Cleansing Oil**
5 fl. oz. ~~720-199~~
reg. \$14
\$11.99



**Rice Water Bright
Mild Cleansing Water**
16.9 fl. oz.
~~288-360~~
reg. \$14.40
\$12



**Rice Water Bright
Facial Massage
Cream**
6.7 fl. oz. ~~450-200~~
reg. \$24
\$19



**Far Away
Eau de Parfum**
1.7 fl. oz. 685-712
reg. \$25
\$18.99



**Far Away
Hair and Body Mist**
3.25 fl. oz. 572-536
reg. \$16
\$11.99



**Far Away
Body Scrub & Wash**
6.7 fl. oz. 143-360
reg. \$12
\$9.99



**Far Away
Body Lotion**
6.7 fl. oz. 082-881
reg. \$10
\$6.99



**Far Away
Hand Cream**
2.5 fl. oz. 364-850
reg. \$7
\$4.99



**Far Away Bali
Eau de Parfum**
1.7 fl. oz. 451-389
reg. \$25
\$18.99



**Far Away Gold
Eau de Parfum**
1.7 fl. oz. 685-727
reg. \$25
\$18.99



**Far Away Infinity
Eau de Parfum**
1.7 fl. oz. 318-481
reg. \$25
\$18.99



**Rare Pearls
Eau de Parfum**
1.7 fl. oz. 761-615
reg. \$25
\$18.99



**Rare Pearls
Hair and Body Mist**
3.25 fl. oz. 572-851
reg. \$16
\$11.99



**Rare Pearls
Body Lotion**
6.7 fl. oz. 082-915
reg. \$10
\$6.99



**Rare Pearls
Hand Cream**
2.5 fl. oz. 364-827
reg. \$7
\$4.99



Rare Gold
Eau de Parfum
1.7 fl. oz. 933-115
reg. \$25
\$18.99



Rare Amethyst
Eau de Parfum
1.7 fl. oz. 933-062
reg. \$25
\$18.99



Imari Seduction
Eau de Toilette
1.7 fl. oz. 452-897
reg. \$25
\$18.99



Imari Amor
Eau de Parfum
1.7 fl. oz. 762-573
reg. \$25
\$18.99



Imari
Eau de Toilette
1.7 fl. oz. 871-496
reg. \$25
\$18.99



Haiku Reflection
Eau de Parfum
1.7 fl. oz. 617-657
reg. \$25
\$18.99



Haiku Kyoto Flower
Eau de Parfum
1.7 fl. oz. 144-352
reg. \$25
\$18.99



Haiku
Eau de Parfum
1.7 fl. oz. 601-030
reg. \$25
\$18.99



Haiku
Hair and Body Mist
3.25 fl. oz. 572-584
reg. \$16
\$11.99



Haiku
Body Scrub & Wash
6.7 fl. oz. 143-208
reg. \$12
\$9.99



Haiku
Body Lotion
6.7 fl. oz. 447-820
reg. \$10
\$6.99



Haiku
Hand Cream
2.5 fl. oz. 364-808
reg. \$7
\$4.99



LYRD Honeysuckle Blossom
Eau de Parfum
1.7 fl. oz. **616-282**
reg. \$24
\$20



LYRD Peony Rosé
Eau de Parfum
1.7 fl. oz. **616-210**
reg. \$24
\$20



LYRD Oud Rose
Eau de Parfum
1.7 fl. oz. **954-412**
reg. \$38
\$32



Live Out Loud
Eau de Parfum
1.7 fl. oz. **142-000**
reg. \$40
\$26.49



Live Out Loud #40
Eau de Parfum
1.7 fl. oz. **735-968**
reg. \$40
\$26.49



Today
Eau de Parfum
1.7 fl. oz. **325-920**
reg. \$30
\$26.49



Mesmerize Cologne
3.4 fl. oz.
871-458
reg. \$25
\$18.99



Mesmerize Black
Eau de Toilette
3.4 fl. oz. **305-667**
reg. \$25
\$18.99



Perceive Cologne
3.4 fl. oz.
194-550
reg. \$25
\$18.99



Alpha
Eau de Toilette
3.4 fl. oz. **088-598**
reg. \$25
\$18.99



Studio 1886 Gentleman
Eau de Toilette
1.7 fl. oz. **708-750**
reg. \$50
\$39



Studio 1886 Gentleman
Aftershave Lotion
6.7 fl. oz. **708-927**
reg. \$16
\$12.99



**Black Suede
Eau de Toilette**
3.4 fl. oz. 908-703
reg. \$22
\$14.99



**Black Suede
Hair & Body Wash**
5 fl. oz. 230-200
reg. \$8
\$3.99



**Black Suede
Aftershave Conditioner**
3.4 fl. oz. 367-238
reg. \$8
\$3.99



Black Suede Bar Soap
3.17 oz. net wt.
495-565
reg. \$6
\$3.99



**Avon Exploration
Eau de Toilette**
2.5 fl. oz. 593-666
reg. \$25
\$18.99



**Wild Country
Cologne**
3 fl. oz. 086-466
reg. \$22
\$14.99



**Wild Country
Aftershave Splash**
4 fl. oz. 366-432
reg. \$13
\$10.49



**Wild Country
Hair & Body Wash**
5 fl. oz. 215-188
reg. \$8
\$3.99



Wild Country Bar Soap
3.17 oz. net wt.
495-570
reg. \$6
\$3.99



Timeless Cologne
1.7 fl. oz.
037-930
reg. \$18
\$12.99



Timeless Hand Cream
2.5 fl. oz.
234-740
reg. \$6
\$3.99



Dreamlife Cologne
1.7 fl. oz.
236-227
reg. \$18
\$12.99



Sweet Honesty Cologne
1.7 fl. oz.
037-595
reg. \$18
\$12.99



Sweet Honesty Hand Cream
2.5 fl. oz.
234-789
reg. \$6
\$3.99



Topaze Cologne
1.7 fl. oz.
735-217
reg. \$18
\$12.99



Night Magic Cologne
1.7 fl. oz.
168-682
reg. \$18
\$12.99



Night Magic Hand Cream
2.5 fl. oz.
235-440
reg. \$6
\$3.99



Free O₂ Eau de Toilette
1.7 fl. oz.
265-658
reg. \$18
\$12.99



Odyssey Cologne
1.7 fl. oz.
168-697
reg. \$18
\$12.99



Candid Cologne
1.7 fl. oz.
038-295
reg. \$18
\$12.99



Timeless Perfumed Skin Softener
 5 fl. oz.
104-478
 reg. \$8
\$3.99



Haiku Perfumed Skin Softener
 5 fl. oz.
813-973
 reg. \$8
\$3.99



Sweet Honesty Perfumed Skin Softener
 5 fl. oz.
104-463
 reg. \$8
\$3.99



Imari Perfumed Skin Softener
 5 fl. oz.
818-239
 reg. \$8
\$3.99



**Night Magic Evening Musk
 Perfumed Skin Softener**
 5 fl. oz. **862-112**
 reg. \$8
\$3.99



Far Away Perfumed Skin Softener
 5 fl. oz.
812-981
 reg. \$8
\$3.99





























Odyssey Perfumed Skin Softener
 5 fl. oz.
862-108
 reg. \$8
\$3.99







Candid Perfumed Skin Softener
 5 fl. oz.
103-926
 reg. \$8
\$3.99



- | | | | | | | | | |
|---|--|--|---|---|---|--|--|--|
| 
Wild Cherry
449-708 | 
Blaze
896-880 | 
Constellation
(Shimmer)
449-731 | 
Stellar
726-550 | 
Honeyflower
726-531 | 
Poppy
897-651 | 
Aster
448-769 | 
Desert Moon
449-803 | 
Windstorm
883-845 |
| 
Equinox
449-818 | 
Twilight
449-822 | 
Cyclone
890-566 | 
Sierra Sunset
890-805 | 
Luna
895-170 | 
Wildrose
898-533 | 
Plum Blossom
449-765 | 
Dahlia
726-350 | 
Rose Angel
897-939 |
| 
Aurora
726-584 | 
Hibiscus
898-021 | 
Wildflower
898-040 | 
Eclipse
448-740 | 
Tulip
449-712 | 
Celestial
895-522 | 
Morning
Glory
449-750 | 
Violet Night
898-548 | |






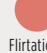
**fmg Glimmer
Satin Lipstick**
.10 oz. net wt.
reg. \$12
\$8.99



- | | |
|---|---|
| 
Lovin' Life
698-867 | 
Birthday Suit
375-706 |
| 
PYT
375-691 | 
Surprise!
375-710 |
| 
Fine Wine
375-725 | 
Birthday Post
375-730 |






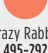

**fmg Glimmer
Birthday Balm Lip Crayon**
.1 oz. net wt. reg. \$15
\$11.99



- | | |
|--|---|
| 
Love Affair
063-242 | 
Pucker Up
063-128 |
| 
Secret Crush
063-147 | 
Rendezvous
063-166 |
| 
Tease
063-132 | 
Flirtatious
063-219 |

fmg LOVE Lip Butter
.09 oz. net wt.
reg. \$18
\$13.99



- | | | |
|--|---|---|
| 
Plum Jam
481-873 | 
Cherry Crush
481-400 | 
Pink Fizz
481-706 |
| 
Felt Pink
495-240 | 
Blackberry Bite
495-364 | |
| 
Crazy Rabbit
495-292 | 
Sour Candy
495-254 | |

**TPSY
Forever Lip Marker**
.08 fl. oz.
reg. \$17
\$13



- | |
|---|
| 
Love Galore
495-197 |
| 
My Boo
495-216 |

**TPSY
Drunk Shiny Lip Oil**
.13 oz. net wt.
reg. \$17
\$13



- | | | | |
|---|---|--|---|
| 
Aubergine
786-960 | 
Taupe
958-126 | 
Espresso
958-896 | 
Buff
956-912 |
| 
Rosewood
958-547 | 
Blush
958-638 | 
Berry
958-619 | 
Smokeshow
787-068 |
| 
Mauve
958-331 | 
Moss
786-540 | 
PeriWink
787-053 | 
Azure
959-213 |

**fmg CathyCat
Shadow Gaze Matte Color Stick**
.0476 oz. net wt.
reg. \$19
\$14.99



Essential Eyes
404-745



Enchanted Eyes
401-440

















- | | | | |
|--|--|--|---|
| 
MATTE SATEEN
Citrine
451-120 | 
MATTE SATEEN
Pink Sapphire
448-591 | 
MATTE SATEEN
Tiger's Eye
500-585 | 
MATTE SATEEN
Jasper
500-566 |
| 
SHIMMER
Pink Topaz
479-150 | 
SHIMMER
Crystal Lilac
479-040 | 
SHIMMER
Rose Gold
469-095 | 
SHIMMER
Bronze Age
469-100 |
| 
GLITTER
Peach Sapphire
469-057 | 
GLITTER
Fool's Gold
469-076 | 
GLITTER
Ultramarine
469-042 | |

**fmg Glimmershadow
Liquid Eyeshadow**
.07 fl. oz. reg. \$12
\$8.99

**fmg Cashmere
Eyeshadow Palette**
.63 oz. total net wt. reg. \$40
\$33 each



**fmg Glimmer
Eyeshadow Quad**
.21 oz. total net wt.
reg. \$15
\$11.99

- | | | | | |
|--|--|--|--|---|
| 
MATTE Calypto
741-261 | 
MATTE Tigress
741-333 | 
MATTE Bombshell
741-170 | 
MATTE Icon
741-439 | 
MULTI Goddess
901-330 |
| 
MULTI Muse
880-459 | 
MULTI Minx
885-738 | 
MULTI Maven
884-750 | 
MULTI Siren
901-493 | 
MULTI Mistress
883-902 |
| 
MULTI Temptress
884-731 | 
MULTI Idol
900-975 | 
MULTI Vixen
901-474 | 
MULTI Darling
880-789 | |



- Blackest Black 334-366
- Saturn Grey 334-328
- Majestic Plum 334-313
- Cosmic Brown 334-351
- Starry Night 334-347
- Emerald Green 334-332

**fmg Glimmer
Cream Eyeliner**
.01 oz. net wt.
reg. \$9
\$3.99



- Honey Peach 327-721
- Lava Red 327-740
- Passion Red 327-650
- Red Brick 330-451
- Mystery Mauve 330-538
- Candy Apple 327-903
- Pink Bouquet 330-356
- Merlot 330-284
- Au Naturel 330-318
- Simply Spice 330-614
- Chocolate 330-667
- Perfect Plum 330-887

**fmg Glimmer
Lipliner**
.01 oz. net wt.
reg. \$9
\$3.99



- Black Ice 331-610
- Sterling 331-960
- Smoky Diamond 331-280
- Sugar Plum 331-625
- Purple Rain 332-071
- Brown Sugar 331-568
- Twilight Sparkle 331-553
- Olive 331-940
- Teal Sparkle 331-606

**fmg Glimmer
Diamond Eyeliner**
.01 oz. net wt.
reg. \$9
\$3.99



- Blackest Night 229-491
- Smoky Grey 332-162
- Raisin 332-200
- Brown Chocolate 332-124
- Midnight Blue 332-158
- Blue Skies 334-237
- Seafoam Green 334-241

**fmg Glimmer
Waterproof Eyeliner**
.01 oz. net wt.
reg. \$9
\$3.99



- Light Blonde 331-109
- Blonde 331-113
- Tawny 331-128
- Light Brown 331-151
- Dark Brown 331-147
- Brunette 331-242

**fmg Glimmer
Brow Definer**
.01 oz. net wt.
reg. \$9
\$3.99



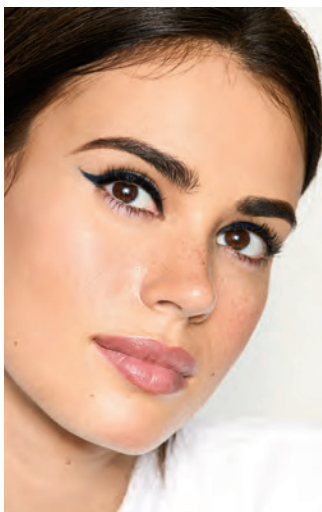
- Black 016-389
- Black Brown 016-446

**fmg Glimmer
Always On Point
Eyeliner**
.01 oz. net wt. reg. \$10
\$7.99



- Blackest Black 354-380


**fmg Glimmer
Liquid Eyeliner**
.037 fl. oz.
reg. \$12
\$9.99




Blonde 792-499 Soft Brown 792-522

Medium Brown 792-537 Brown Black 792-556

fmg Colors of LOVE Hi-Brow Tinted Brow Gel
.11 fl. oz.
reg. \$18
\$13.99



fmg Colors of LOVE Hi-Brow Sculpting Brow Gel
.11 fl. oz.
536-695
reg. \$18
\$13.99



●
Blackest Black
698-670

fmg LOVE at 1st Lash Mascara
.3 fl. oz.
reg. \$18
\$13.99



●
Waterproof Blackest Black
480-953

fmg LOVE at 1st Lash Waterproof Mascara
.29 fl. oz.
reg. \$18
\$13.99



●
Rich Black
153-736

fmg Cashmere Ultimate Volume Mascara
.27 fl. oz.
reg. \$23
\$18



●
Black
723-107

fmg Glimmer Wash-Off Waterproof Mascara
.21 oz. net wt.
reg. \$12
\$8.99



● ●
Black 698-848 Brown Black 698-852

fmg Glimmer SuperExtend Nourishing Mascara
.237 fl. oz.
reg. \$13
\$9.99



●
Black
698-829

fmg Glimmer SuperShock Volumizing Mascara
.338 fl. oz.
reg. \$13
\$9.99



**fmg Match Filter
Serum Tint Foundation**
.31 oz. net wt.
reg. \$21
\$15.99



**fmg Match Set
Finishing Powder**
.22 oz. net wt. **932-472**
reg. \$19
\$14.99



**fmg Match
Prime
Face
Perfector**
1 fl. oz.
103-744
reg. \$17
\$12.99



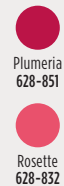
**fmg Match Tint Radiant
Tinted Moisturizer**
1 fl. oz.
reg. \$14
\$10.99



**fmg Match
Wand
Correcting
Stick**
.21 oz. net wt.
reg. \$18
\$13.99



**fmg Cashmere
Under Eye
Primer**
.317 oz. net wt.
010-429
reg. \$24
\$19



**fmg Glimmer
Lip & Cheek
Stain**
.19 fl. oz.
reg. \$17
\$12.99



**fmg Glimmer
Powder Illuminator**
.35 oz. net wt.
reg. \$14
\$10.99



**fmg GLOKOLOR
Lip Serum Pencil**
.06 oz. net wt.
787-508
reg. \$20
\$16



**fmg Glimmer
Powder Blush**
.28 oz. net wt.
reg. \$14
\$10.99



**fmg GLOKOLOR
Hybrid Face Primer**
1 fl. oz. **787-637**
reg. \$24
\$20



**fmg Glimmer
Be Blushed Cheek Color**
.14 oz. net wt.
reg. \$15
\$11.99



**fmg GLOKOLOR
Hybrid Face Mist**
2.7 fl. oz. **787-599**
reg. \$24
\$20



fmg Vanity Organizer
9½" L x 6" W x 5" H.
022-816
reg. \$30
\$23.99



fmg Makeup Remover Wipes
Resealable pack of 24 wipes.
333-867
reg. \$10
\$7.99



fmg Set & Fix Spray
1.7 fl. oz.
416-707
reg. \$15
\$9.99



fmg Moisturizing Eye Makeup Remover Lotion
2.5 fl. oz. 543-272
reg. \$8
\$5.99



fmg Waterproof Lip & Eye Makeup Remover
3.7 fl. oz. 352-243
reg. \$12
\$7.99



fmg Express Makeup Brush Wash
1 fl. oz. 141-368
reg. \$14
\$10.99



fmg Oil Rewind Roller Ball
1" W x 3" H. 508-294
reg. \$18
\$13.99



fmg Flawless Complexion Sponge
2½" L x 1½" W. 140-160
reg. \$10
\$7.99



fmg Unready Makeup Remover Cloth
9½" sq. 230-176
reg. \$14
\$10.99



fmg Kabuki Brush
 3¾" L x 1" diam.
732-370
 reg. \$19
\$14.99



fmg Eyeshadow Blending Brush
 6" L. **933-320**
 reg. \$15
\$11.99



fmg Blush & Contour Brush
 7¼" L. **933-259**
 reg. \$22
\$16.99



fmg Complexion Blending Brush
 6½" L. **933-210**
 reg. \$23
\$17.99



fmg Precision Eye Brush
 5¼" L. **933-187**
 reg. \$15
\$11.99



Daily Beauty Tools Tweezers
 3½" L. **747-020**
 reg. \$4
\$2.99



fmg Glimmer Nail Lacquer Eraser Pen
 .135 fl. oz. **704-443**
 reg. \$12
\$8.99



fmg Glimmer Nail Lacquer
Nail Base & Top Coat
 Not shown. **018-161**
 Each, .4 fl. oz. reg. \$12
\$8.99

- | | | | |
|---|--|--|--|
| | | | |
| SATIN
Lost Galaxy Plum
598-911 | SATIN
Black Hole Burgundy
018-286 | SATIN
Supernova Red
018-267 | SATIN
Night Sky Berry
602-658 |
| | | | |
| SATIN
High Magnitude Mauve
018-840 | SATIN
Lunar Tan
602-753 | SATIN
Cool Comet
602-830 | SATIN
Full Moon Flush
018-730 |
| | | | |
| METALLIC
Meteorite Rose
019-369 | METALLIC
Golden Galaxy
019-354 | | |



Sold separately:
Bonus-Size Skin So Soft and Moisture Therapy Body Lotion Pump
 101-149
\$3



Soft & Sensual Bonus-Size Body Lotion
 33.8 fl. oz.
 336-062
 reg. \$23
\$18.99
 Pump sold separately.



Soft & Sensual Bonus-Size Shower Gel
 33.8 fl. oz.
 018-142
 reg. \$18
\$13.99



Soft & Sensual Shower Gel
 5 fl. oz.
 435-600
 reg. \$8
\$5.19



Soft & Sensual Body Lotion
 11.8 fl. oz.
 934-312
 reg. \$11
\$7.69



Soft & Sensual Bonus-Size Bath Oil
 25 fl. oz.
 862-920
 reg. \$30
\$21.69



Soft & Sensual Bath Oil
 16.9 fl. oz.
 504-614
 reg. \$24
\$16.99



Soft & Sensual Gelled Body Oil
 6.76 fl. oz.
 908-244
 reg. \$13
\$8.69

Soft & Sensual Beauty Bar Soap
 3.17 oz. net wt.
 543-215
 reg. \$4.50
\$3.49



Soft & Sensual Replenishing Hand Cream
 3.4 fl. oz.
 867-315
 reg. \$5
\$2.69



Acne-Prone Skin Soothing Spot Gel
 .5 fl. oz.
 072-721
 reg. \$18
\$13.99



Acne-Prone Skin Foaming Cleanser
 5 fl. oz.
 041-647
 reg. \$17
\$12.99

Acne-Prone Skin Body Pads
 70 pads. 039-330
 reg. \$30
\$24.99



Acne-Prone Skin Exfoliating Body Wash
 10.1 fl. oz.
 041-556
 reg. \$20
\$15.99



Acne-Prone Skin Gentle Body Wash
 10.1 fl. oz.
 039-325
 reg. \$20
\$15.99



Acne-Prone Skin Soothing Gel
 6.1 fl. oz.
 040-636
 reg. \$20
\$15.99



Original Bath Oil
16.9 fl. oz.
439-040
reg. \$24
\$16.99



Original Bonus-Size Bath Oil
25 fl. oz.
037-690
reg. \$30
\$21.69



Original Bath Oil Spray
5 fl. oz.
967-571
reg. \$14
\$9.29

Sold separately:
Bath Oil Spray Pump
(not shown)
101-320
\$3



Original Gelled Body Oil
6.76 fl. oz.
939-500
reg. \$13
\$8.69



Original Shower Gel
5 fl. oz.
914-580
reg. \$8
\$5.19



Original Bonus-Size Shower Gel
33.8 fl. oz.
433-444
reg. \$18
\$13.99



Original Body Lotion
11.8 fl. oz.
761-634
reg. \$11
\$7.69



Original Bonus-Size Body Lotion
33.8 fl. oz.
336-043
reg. \$23
\$18.99
Pump sold separately.

Original Beauty Bar Soap
3.17 oz. net wt.
543-110 reg. \$4.50
\$3.49



Original Replenishing Hand Cream
3.4 fl. oz.
941-268
reg. \$5
\$2.69



Radiant Moisture Shower Gel
5 fl. oz.
410-914
reg. \$8
\$5.19



Radiant Moisture Bonus-Size Bath Oil
25 fl. oz.
249-788
reg. \$30
\$21.69



Radiant Moisture Bonus-Size Shower Gel
33.8 fl. oz.
433-922
reg. \$18
\$13.99



Radiant Moisture Bonus-Size Body Lotion
33.8 fl. oz.
337-346
reg. \$23
\$18.99
Pump sold separately.



Radiant Moisture Replenishing Hand Cream
3.4 fl. oz.
892-650
reg. \$5
\$2.69



Supreme Nourishment Bonus-Size Body Lotion
33.8 fl. oz.
337-475
reg. \$23
\$18.99
Pump sold separately.



Sold separately:
Bonus-Size Body Lotion Pump
 101-149
\$3



Moisture Therapy Bonus-Size Intensive Healing & Repair Body Lotion
 33.8 fl. oz.
 325-547
 reg. \$18
\$14.99
 Pump sold separately.



Moisture Therapy Bonus-Size Daily Skin Defense Body Lotion
 33.8 fl. oz.
 603-028
 reg. \$18
\$14.99
 Pump sold separately.



Moisture Therapy Bonus-Size Calming Relief Body Lotion
 33.8 fl. oz.
 761-620
 reg. \$18
\$14.99
 Pump sold separately.

Moisture Therapy Intensive Healing & Repair Extra Strength Cream
 5.3 oz. net wt.
 772-972 reg. \$8
\$5.39



Moisture Therapy Balance + Soothe Body Wash
 13.2 fl. oz.
 438-078
 reg. \$23
\$18



Moisture Therapy Balance + Soothe Body Lotion
 13.2 fl. oz.
 438-082
 reg. \$25
\$20



Foot Works Deodorizing Spray
 3.5 oz. net wt.
 313-236
 reg. \$10
\$7.99



Foot Works Overnight Renewing Cream
 3.4 fl. oz.
 324-225
 reg. \$9
\$5.99



Foot Works Deep Moisturizing Cream
 2.5 fl. oz.
 308-962
 reg. \$6
\$4.69



Foot Works Intensive Moisture Foot Cream
 2.5 fl. oz.
 302-012
 reg. \$6
\$4.99



Foot Works Arthritis Achy Foot and Muscle Cream
 2.5 fl. oz.
 208-400
 reg. \$7
\$5.99



Foot Works Intensive Callus Cream
 3.4 fl. oz.
 851-310
 reg. \$7
\$5.99



Foot Works Maximum Strength Cracked Heel Cream
 2.5 fl. oz.
 310-404
 reg. \$7
\$5.99



Foot Works Pedicure Kit
 121-029
 reg. \$11
\$8.39



Foot Works Pedicure Tool
 592-712
 reg. \$11
\$8.39



Avon Aromatherapy Body Lotion Bright Day Ahead
5.8 fl. oz.
584-670
reg. \$17
\$13.99



Avon Aromatherapy Body Lotion Bye-Bye Stress
5.8 fl. oz.
584-684
reg. \$17
\$13.99



Avon Aromatherapy Body Lotion Sleep Tight Zzz
5.8 fl. oz.
584-866
reg. \$17
\$13.99

Veilment Himalaya Pink Salt Exfoliating Soap
5.3 oz. net wt.
260-440
reg. \$8
\$6



Veilment Glacial Water Cooling Body Scrub & Cleanser
13.5 fl. oz.
735-399
reg. \$15
\$13.69



Veilment Dead Sea Salt Body Scrub & Cleanser
13.5 fl. oz.
707-988
reg. \$15
\$13.69



Veilment Himalaya Pink Salt Body Scrub & Cleanser
13.5 fl. oz.
708-252
reg. \$15
\$13.69



Veilment Black Rose Body Scrub & Cleanser
13.5 fl. oz.
707-969
reg. \$15
\$13.69



Veilment CBD Dry Body Oil
3.73 fl. oz.
869-485
reg. \$37
\$30



Veilment CBD Nourishing Body Cream (Tube)
6.7 fl. oz.
254-229
reg. \$38
\$33



Veilment CBD Soothing & Nourishing Body Cream
1.7 fl. oz.
524-509
reg. \$33
\$29.50



Veilment CBD Nourishing Body Cream
5 fl. oz. **524-513**
reg. \$33
\$29.50



Skin So Soft Supreme Nourishment Enriching Coconut Oil Wash
11.8 fl. oz.
366-380
reg. \$15
\$9.99



Skin So Soft Comforting Shea Bath Oil
16.9 fl. oz.
015-071
reg. \$24
\$16.99

Veilment Lumière Sunless Tanning Serum
Each, 1.01 fl. oz.
Light/Medium **422-307**
Medium/Dark **422-326**
reg. \$24
\$19.99 each



❖ **Senses Gratitude
Lavender &
Cedarwood Candle**
3½" H x 3" diam.
7 oz. net wt. **504-686**
reg. \$23
\$18.99



**Senses Gratitude
Lavender &
Cedarwood
Room Spray**
3.25 fl. oz.
361-851
reg. \$13
\$10.99



**Senses Gratitude
Lavender &
Cedarwood
Air Diffuser**
Six diffuser
reeds.
Fragrance oil,
2.37 fl. oz.
504-724
reg. \$30
\$24.99

**Senses Gratitude
Lavender &
Cedarwood
Shower Steamers**
Each, 1 oz. net wt.
504-428 reg. \$26
\$20.99 set of 6



**Senses Gratitude
Lavender &
Cedarwood Bath Salts**
12.5 oz. net wt.
504-557
reg. \$23
\$18.99



**Senses Sparkling
Grapefruit
& Orange
Blossom
Shower Gel**
10 fl. oz.
367-204
reg. \$17
\$13.99



**Senses Sparkling
Grapefruit
& Orange
Blossom
Body Lotion**
8 fl. oz.
367-219
reg. \$17
\$13.99



**Senses Sparkling
Grapefruit
& Orange
Blossom
Body Mist**
8 fl. oz.
034-687
reg. \$18
\$14.99

**Senses Sparkling
Grapefruit
& Orange
Blossom
Hand Soap**
10.1 fl. oz.
415-127
reg. \$13.99
\$10.99



**Senses Sparkling
Grapefruit
& Orange
Blossom
Hand
Cream**
2.5 fl. oz.
852-120
reg. \$6
\$4.99



**Senses Cozy
Vanilla &
Coconut
Shower
Gel**
10 fl. oz.
200-227
reg. \$17
\$13.99



**Senses Cozy
Vanilla &
Coconut
Body
Lotion**
8 fl. oz.
035-152
reg. \$17
\$13.99

**Senses Cozy Vanilla
& Coconut
Body Scrub**
9 oz. net wt. **530-314**
reg. \$22
\$17.99



**Senses Cozy
Vanilla &
Coconut
Body Mist**
8 fl. oz.
034-888
reg. \$18
\$14.99



**Senses Cozy
Vanilla &
Coconut
Hand Soap**
10.1 fl. oz.
178-675
reg. \$13.99
\$10.99



**Senses Cozy
Vanilla &
Coconut
Hand
Cream**
2.5 fl. oz.
015-029
reg. \$6
\$4.99



Senses Blushing Cherry Blossom Hydrating Shower Gel
5 fl. oz.
423-299
reg. \$6
\$3.69



Senses Silky Vanilla Hydrating Shower Gel
5 fl. oz.
462-105
reg. \$6
\$3.69



Senses Fresh Cucumber & Melon Hydrating Shower Gel
5 fl. oz.
462-071
reg. \$6
\$3.69



Senses Juicy Pomegranate & Mango Hydrating Shower Gel
5 fl. oz.
462-139
reg. \$6
\$3.69



Senses Cherry Blossom Bubble Bath
24 fl. oz.
425-033
reg. \$11
\$8.99



Senses Vanilla Cream Bubble Bath
24 fl. oz.
214-220
reg. \$11
\$8.99



Senses Cucumber Melon Bubble Bath
24 fl. oz.
688-950
reg. \$11
\$8.99



Senses Orange & Honeysuckle Bubble Bath
24 fl. oz.
633-952
reg. \$11
\$8.99



Senses Soft Pink Bubble Bath
24 fl. oz.
425-052
reg. \$11
\$8.99



Senses Sensitive Skin Bubble Bath
24 fl. oz.
213-151
reg. \$11
\$8.99



Senses Endless Ocean Bubble Bath
24 fl. oz.
425-048
reg. \$11
\$8.99



Senses Lily & Honeysuckle Blossom Bubble Bath
24 fl. oz.
423-394
reg. \$11
\$8.99



Senses Lavender Garden Bubble Bath
24 fl. oz.
424-735
reg. \$11
\$8.99



Senses Fresh Bergamot & Wild Mint Hand Cream
2.5 fl. oz.
852-498
reg. \$6
\$4.99



Avon Shower Brush
904-727
reg. \$10
\$7.99

Exfoliation Mitt
439-734
reg. \$11
\$8.99





Bug Guard Plus IR3535® Expedition Family-Size Pump Spray SPF 30
8 fl. oz.
324-316
reg. \$22
\$17.99
Pump sold separately.



Bug Guard Plus Picaridin Family-Size Pump Spray
8 fl. oz.
650-666
reg. \$22
\$17.99
Pump sold separately.



Sold separately:
Bug Guard Plus Family-Size Pump
for 8 fl. oz.
101-191
\$2.50



Bug Guard Plus IR3535® Expedition Pump Spray SPF 30
4 fl. oz.
324-320
reg. \$14
\$11.99
Pump sold separately.



Bug Guard Plus Picaridin Pump Spray
4 fl. oz.
324-335
reg. \$14
\$11.99
Pump sold separately.



Sold separately:
Bug Guard Plus Pump
for 4 fl. oz.
101-225
\$2.25



Bug Guard Plus IR3535® Expedition Aerosol Spray SPF 28
4 oz. net wt.
521-370
reg. \$20
\$14.99



Bug Guard Plus Picaridin Aerosol Spray
4 oz. net wt.
315-243
reg. \$20
\$14.99



Bug Guard Plus Picaridin Towelettes
Each,
9" L x 5½" W,
.3 fl. oz.
269-562
reg. \$16
\$11.69
pack of 8



Bug Guard Plus IR3535® Gentle Breeze SPF 30 Lotion
4 fl. oz.
851-324
reg. \$15
\$9.99



Bug Guard Anti-Itch Spray
2 fl. oz.
972-031
reg. \$11
\$8.99
Pump sold separately.



Sold separately:
Bug Guard Anti-Itch Spray Pump
for 2 fl. oz.
101-168
\$2



Rare Pearls
906-897



Night Magic Evening
Musk 836-298



Odyssey
410-880



Sweet Honesty
839-021



Timeless
941-583



Candid
656-095



Far Away
891-376



Haiku
836-264



Imari
180-887



Rare Gold
836-250



Skin So Soft
Soft & Sensual
714-861



Feelin' Fresh
Original
925-546



Cool Confidence
Original
926-777



Cool Confidence
Baby Powder
427-275



On Duty
Unscented
926-820



On Duty
Original
393-970



Black Suede
337-403



Mesmerize
663-442



Wild Country
656-080

**Roll-On
Anti-Perspirant
Deodorant**
Each, 2.6 fl. oz.
reg. \$3.60
\$2.69 each



On Duty Sport
875-726



**Perfumed
Liquid
Deodorant**
2 fl. oz.
687-681
reg. \$6
\$4.50



**Avon
Microbiome
by REACH®
Hygiene
Deodorant
Stick**
2.65 oz.
net wt.
524-528
reg. \$13
\$10.99



**Avon Care
Silicone
Glove
Protective
Hand
Cream**
3.4 fl. oz.
366-887
reg. \$6
\$2.69



**Skin So Soft
Supreme
Nourishment
Tropical
Coconut
Lip Balm**
.14 oz. net wt.
958-370
reg. \$2
\$1.39



**Veilment Care
Lip Balm**
Strawberry
602-720
Cherry
604-168
Each,
.14 oz. net wt.
reg. \$2
99¢ each



**Moisture
Therapy
Intensive
Healing & Repair
Moisturizing
Lip Treatment
Balm 285-117**
Daily Defense
946-729
Each, .14 oz.
net wt. reg. \$2
99¢ each



**Moisture
Therapy
Intensive
Healing &
Repair
Hand
Cream**
4.2 fl. oz.
482-937
reg. \$6
\$2.69



Root Touch-Up
Each,
.25 oz. net wt.
reg. \$18
\$15.99



**BioSilk®
Silk Therapy®**
5.64 fl. oz.
011-349
reg. \$35
\$28.99



**CHI® Essentials
Replenishing
Shampoo**
12 fl. oz.
589-140
reg. \$20
\$16.99



**CHI® Essentials
Moisturizing
Conditioner**
12 fl. oz.
589-409
reg. \$20
\$16.99



**CHI® Essentials
Repairing
Serum**
6 fl. oz.
589-413
reg. \$33
\$27.59



**CHI® Essentials
Revive Keratin
+ Bonding
Restoring
Shampoo**
12 fl. oz.
451-192
reg. \$25
\$19.99



**CHI® Essentials
Revive Keratin
+ Bonding
Restoring
Conditioner**
12 fl. oz.
451-211
reg. \$25
\$19.99



**CHI® Essentials
Revive Keratin
+ Bonding
Protecting
Serum**
3 fl. oz.
451-340
reg. \$42
\$34.99



**CHI®
1" Volcanic Lava
Ceramic Pro
Spin 'n' Curl**
471-527
reg. \$199
\$179



**CHI®
Advanced
Ionic Compact
Hair Dryer**
Attachments
included.
471-474
reg. \$150
\$135



**CHI®
ENVIRO 54°
Natural Hold
Hair Spray**
10 oz. net wt.
908-450
reg. \$26.50
\$21.50



Dr. Groot Scalp Fortifying Hair-Thickening Shampoo
13.5 fl. oz.
778-014
reg. \$35
\$29



Dr. Groot Premium Scalp Cleansing Brush
065-776
reg. \$19
\$16



Dr. Groot Scalp Fortifying Serum Treatment
6.7 fl. oz.
782-271
reg. \$35
\$29



Dr. Groot Anti-Dandruff Scalp Care Shampoo
10.1 fl. oz.
451-412
reg. \$27
\$21.99



Dr. Groot Anti-Dandruff Scalp Care 2-in-1 Shampoo and Conditioner
10.1 fl. oz.
451-431
reg. \$27
\$21.99



Elastine Salon de Color Color Vibe Purple Shampoo
8.4 fl. oz.
436-109
reg. \$17
\$13.99



Elastine Salon de Color Color Vibe Purple Conditioner
8.4 fl. oz.
436-955
reg. \$17
\$13.99



Avon Detangling Comb
504-820
reg. \$5.99
\$4.99



Avon Blow-Dry Round Hairbrush
504-800
reg. \$17.99
\$14.99



Avon Compact Hairbrush
504-743
reg. \$9.99
\$7.99



Avon Detangling Hairbrush
504-815
reg. \$12.99
\$9.99



Elastine Botanicals Rosemary & Sea Salt Volumizing Shampoo
6.7 fl. oz.
240-556
reg. \$4.50
\$3.79



Elastine Botanicals Rosemary & Sea Salt Volumizing Conditioner
6.7 fl. oz.
246-831
reg. \$4.50
\$3.79



Elastine Botanicals Cherry Blossom & Hyaluronic Acid Moisturizing Shampoo
6.7 fl. oz.
239-943
reg. \$4.50
\$3.79



Elastine Botanicals Cherry Blossom & Hyaluronic Acid Moisturizing Conditioner
6.7 fl. oz.
240-059
reg. \$4.50
\$3.79



Elastine Botanicals Argan & Castor Anti-Frizz Shampoo
6.7 fl. oz.
150-866
reg. \$5.39
\$4.49



Elastine Botanicals Argan & Castor Anti-Frizz Conditioner
6.7 fl. oz.
150-904
reg. \$5.39
\$4.49



Elastine Moisture Essentials Volume Shampoo
12.7 fl. oz.
495-106
reg. \$9
\$6.99



Elastine Moisture Essentials Volume Conditioner
12.7 fl. oz.
495-110
reg. \$9
\$6.99



Elastine Moisture Essentials Shine Shampoo
12.7 fl. oz.
495-125
reg. \$9
\$6.99



Elastine Moisture Essentials Shine Conditioner
12.7 fl. oz.
495-130
reg. \$9
\$6.99



Advance Techniques 360 Nourish with Moroccan Argan Oil Leave-In Treatment
2 fl. oz.
511-411
reg. \$16
\$11.69



Advance Techniques Daily Shine Dry Ends Serum
2 fl. oz.
883-190
reg. \$11
\$7.99



Advance Techniques Daily Shine 2-in-1 Shampoo & Conditioner
11.8 fl. oz.
358-218
reg. \$11
\$8.99



Elastine CBD & Hemp Seed Oil Cooling & Soothing Conditioner
11.8 fl. oz.
436-989
reg. \$23
\$19



Elastine PropoliThera Volumizing Shampoo
16.9 fl. oz.
892-607
reg. \$18
\$15.99



Elastine PropoliThera Volumizing Conditioner
16.9 fl. oz.
892-870
reg. \$18
\$15.99



Elastine PropoliThera Damage Repair Shampoo
16.9 fl. oz.
053-082
reg. \$18
\$15.99



Elastine PropoliThera Damage Repair Conditioner
16.9 fl. oz.
638-681
reg. \$18
\$15.99



Elastine PropoliThera Damage Repair Hair Oil Serum
5.7 fl. oz.
895-190
reg. \$18
\$15.99

Elastine PropoliThera Damage Repair Hair Mask
10.1 fl. oz. 150-301
reg. \$18
\$15.99



Elastine PropoliThera Leave-In Conditioner
8.1 fl. oz.
102-570
reg. \$19
\$15



Elastine PropoliThera Serum Treatment
7.8 fl. oz.
359-821
reg. \$22
\$18

Elastine PropoliThera Hair Deep Conditioning Treatment Cap
053-761 reg. \$8
\$6.99



Elastine PropoliThera Aloe Dual-Active Hair Serum
3.4 fl. oz.
102-585
reg. \$30
\$25



Elastine HempharmX Hydrating Shampoo
13.5 fl. oz.
359-836
reg. \$24
\$20



Elastine HempharmX Hydrating Conditioner
13.5 fl. oz.
360-544
reg. \$24
\$20

try a serum

see what your skin care's been missing

Avon Solutions Banishing Serum

An intensive serum with ingredients known to help improve the appearance of dark spots and uneven skin tone. 1 fl. oz.

507-905
reg. \$16

\$9.99



LOWEST PRICE
THIS YEAR

Avon Solutions Dramatic Firming Serum

This moisturizing serum contains effective anti-aging ingredients that help promote a more youthful appearance. 1 fl. oz. 507-871 reg. \$16

\$9.99

Avon Solutions Nurtura Serum
With skin-nourishing ingredients known to help combat dryness and flakiness, and help hydrate. 1 fl. oz. 507-924 reg. \$16

\$9.99

Enjoy special prices and offers with an Avon account or Representative.

© 2024 The Avon Company. All rights reserved.

CAMPAIGN 7, 2024

THE AVON COMPANY
165 BROADWAY, NY, NY 10006

avon.com



Pk of 10 4713171



Single 4713211

Brochure effective until _____



See our commitment at
www.avon.com/animal-welfare

RETURN POLICY If you are not satisfied, return any item within 45 days. View Avon's full 45-Day Return Policy at avon.com/shipping-returns.